

DATASHEET

CYLD Mouse Monoclonal Antibody(C4014)

CAT. NO. AMA03626

KEY FEATURES

Target	CYLD	Source / Host	Mouse
Reactivity	Human	Clonality	Monoclonal
Applications	WB, FC	Conjugation	Unconjugated
Form / Buffer	Mouse IgG2a kappa. Liquid in PBS, pH 7.3, 30% glycerol, and 0.01% sodium azide.	Storage	at-20°C

BACKGROUND

Deubiquitinase that specifically cleaves 'Lys-63'- and linear 'Met-1'-linked polyubiquitin chains and is involved in NF-kappa-B activation and TNF-induced necroptosis . Negatively regulates NF-kappa-B activation by deubiquitinating upstream signaling factors . Contributes to the regulation of cell survival, proliferation and differentiation via its effects on NF-kappa-B activation . Negative regulator of Wnt signaling . Inhibits HDAC6 and thereby promotes acetylation of alpha-tubulin and stabilization of microtubules . Plays a role in the regulation of microtubule dynamics, and thereby contributes to the regulation of cell proliferation, cell polarization, cell migration, and angiogenesis . Required for normal cell cycle progress and normal cytokinesis .

APPLICATION

To ensure optimal assay performance, AREX recommends conducting reagent titration tailored to each testing system for optimal detection results.

WB	1:500 - 1:2000
FC	1:10 - 1:50

*Results are sample-specific. Please refer to your local assay conditions and test parameters for reference.

PRODUCT OVERVIEW

Description	Mouse monoclonal antibody to CYLD
Specificity	Recognizes endogenous levels of CYLD protein.
Antibody Type	Primary antibody
Immunogen	KLH-conjugated synthetic peptide encompassing a sequence within the center region of human CYLD. The exact sequence is proprietary.
Purification	This antibody is purified through a protein G column.
Molecular Weight	Predicted: 107 kD; Observed: 107 kD
Form/Buffer	Mouse IgG2a kappa. Liquid in PBS, pH 7.3, 30% glycerol, and 0.01% sodium azide.
Alternative Names	CYLD1; KIAA0849; Ubiquitin carboxyl-terminal hydrolase CYLD; Deubiquitinating enzyme CYLD; Ubiquitin thioesterase CYLD; Ubiquitin-specific-processing protease CYLD
Gene Symbol	CYLD
Entrez Gene	1540(Human)
SwissProt	Q9NQC7(Human)

*AREX continuously optimizes our products. Webpage content may not reflect the latest updates. For inquiries, please contact info@arexbio.com or your local distributor.

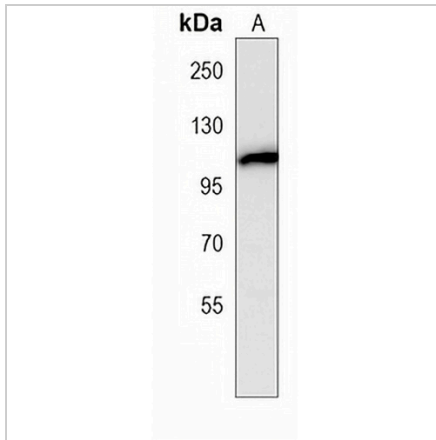
*Clone Number, Reactivity, Source/Host and Clonality can be found in the product name and Key Features section above.

DATASHEET

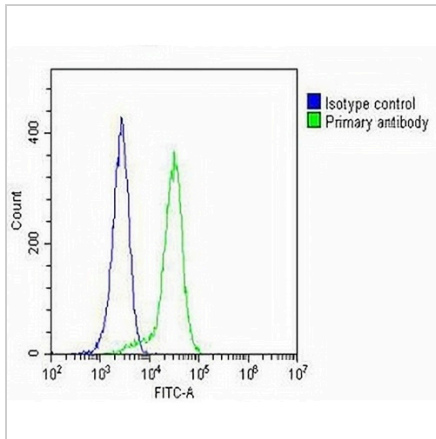
CYLD Mouse Monoclonal Antibody(C4014)

CAT. NO. AMA03626

DATA



Western blot analysis of CYLD expression in HeLa (A) whole cell lysates. (Predicted band size: 107 kD; Observed band size: 107 kD)



Flow cytometric analysis of HeLa cells using Anti-CYLD Antibody. The cells were fixed with 2% paraformaldehyde (10 min) and then permeabilized with 90% methanol for 10 min. The cells were incubated in 2% bovine serum albumin to block non-specific protein-protein interactions followed by the antibody at 37 °C for 60 min. The secondary antibody Goat Anti-Mouse IgG (H&L) - AREX® Fluor 488 was incubated at 37 °C for 40 min. Isotype control antibody (blue line) was used under the same condition.

STORAGE

Store at 4°C short term. For long term storage, store at -20°C, avoiding freeze/thaw cycles.

NOTE

For Research Use Only. Not for diagnostic, therapeutics, prophylactic or in vivo use.