

DATASHEET

Pr-Set7 Mouse Monoclonal Antibody(C4015)

CAT. NO. AMA03627

KEY FEATURES

Target	Pr-Set7	Source / Host	Mouse
Reactivity	Human	Clonality	Monoclonal
Applications	WB, IHC, IF/ICC	Conjugation	Unconjugated
Form / Buffer	Mouse IgG1. Liquid in PBS, pH 7.3, 30% glycerol, and 0.01% sodium azide.	Storage	at-20°C

BACKGROUND

Protein-lysine N-methyltransferase that monomethylates both histones and non-histone proteins . Specifically monomethylates 'Lys-20' of histone H4 (H4K20me1) . H4K20me1 is enriched during mitosis and represents a specific tag for epigenetic transcriptional repression . Mainly functions in euchromatin regions, thereby playing a central role in the silencing of euchromatic genes . Required for cell proliferation, probably by contributing to the maintenance of proper higher-order structure of DNA during mitosis . Involved in chromosome condensation and proper cytokinesis . Nucleosomes are preferred as substrate compared to free histones . Mediates monomethylation of p53/TP53 at 'Lys-382', leading to repress p53/TP53-target genes .

APPLICATION

To ensure optimal assay performance, AREX recommends conducting reagent titration tailored to each testing system for optimal detection results.

WB	1:500 - 1:1000
IHC	1:50 - 1:200
IF/ICC	1:10 - 1:50

*Results are sample-specific. Please refer to your local assay conditions and test parameters for reference.

PRODUCT OVERVIEW

Description	Mouse monoclonal antibody to Pr-Set7
Specificity	Recognizes endogenous levels of Pr-Set7 protein.
Antibody Type	Primary antibody
Immunogen	Recombinant fusion protein of human Pr-Set7. The exact sequence is proprietary.
Purification	This antibody is purified through a protein G column.
Molecular Weight	Predicted: 42 kD; Observed: 63 kD
Form/Buffer	Mouse IgG1. Liquid in PBS, pH 7.3, 30% glycerol, and 0.01% sodium azide.
Alternative Names	KMT5A; PRSET7; SET07; SET8; N-lysine methyltransferase SETD8; H4-K20-HMTase SETD8; Histone-lysine N-methyltransferase SETD8; Lysine N-methyltransferase 5A; PR/SET domain-containing protein 07; PR-Set7; PR/SET07; SET domain-containing protein 8
Gene Symbol	SETD8
Entrez Gene	387893(Human)
SwissProt	Q9NQR1(Human)

*AREX continuously optimizes our products. Webpage content may not reflect the latest updates. For inquiries, please contact info@arexbio.com or your local distributor.

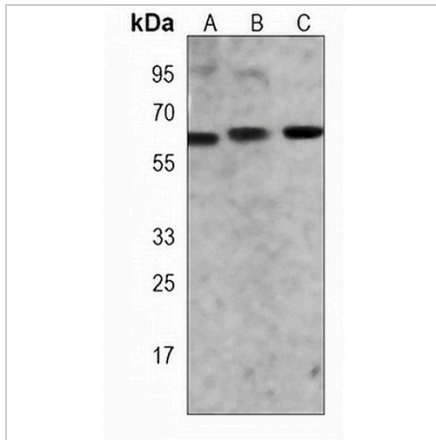
*Clone Number, Reactivity, Source/Host and Clonality can be found in the product name and Key Features section above.

DATASHEET

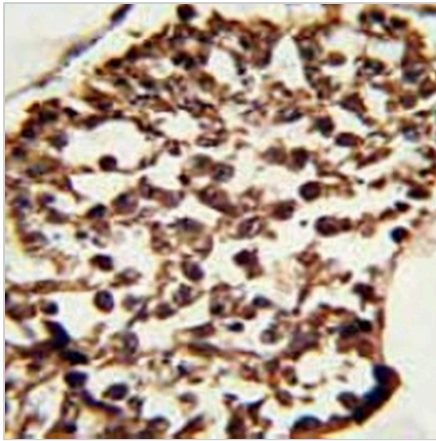
Pr-Set7 Mouse Monoclonal Antibody(C4015)

CAT. NO. AMA03627

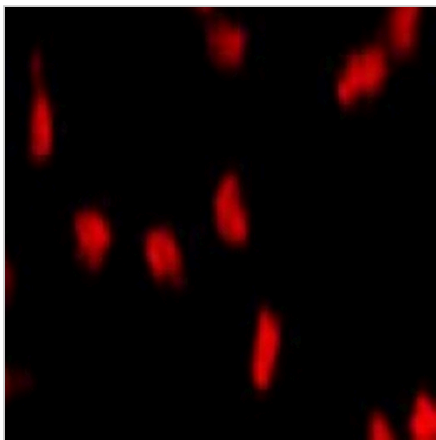
DATA



Western blot analysis of Pr-Set7 expression in 293T (A), 293 (B), K562 (C) whole cell lysates. (Predicted band size: 42 kD; Observed band size: 63 kD)



Immunohistochemical analysis of Pr-Set7 staining in human testis formalin fixed paraffin embedded tissue section. The section was pre-treated using heat mediated antigen retrieval with sodium citrate buffer (pH 6.0). The section was then incubated with the antibody at room temperature and detected using an HRP conjugated compact polymer system. DAB was used as the chromogen. The section was then counterstained with haematoxylin and mounted with DPX.



Immunofluorescent analysis of Pr-Set7 staining in HeLa cells. Formalin-fixed cells were permeabilized with 0.1% Triton X-100 in TBS for 5-10 minutes and blocked with 3% BSA-PBS for 30 minutes at room temperature. Cells were probed with the primary antibody in 3% BSA-PBS and incubated overnight at 4 °C in a humidified chamber. Cells were washed with PBST and incubated with a AREX® Fluor 594-conjugated secondary antibody (red) in PBS at room temperature in the dark. DAPI was used to stain the cell nuclei (blue).

STORAGE

Store at 4°C short term. For long term storage, store at -20°C, avoiding freeze/thaw cycles.

NOTE

For Research Use Only. Not for diagnostic, therapeutics, prophylactic or in vivo use.