

DATASHEET

EIF2B3 Mouse Monoclonal Antibody(C4018)

CAT. NO. AMA03630

KEY FEATURES

Target	EIF2B3	Source / Host	Mouse
Reactivity	Human	Clonality	Monoclonal
Applications	WB, IF/ICC, FC	Conjugation	Unconjugated
Form / Buffer	Mouse IgG1 kappa. Liquid in PBS, pH 7.3, 30% glycerol, and 0.01% sodium azide.	Storage	at-20°C

BACKGROUND

Acts as a component of the translation initiation factor 2B (eIF2B) complex, which catalyzes the exchange of GDP for GTP on the eukaryotic initiation factor 2 (eIF2) complex gamma subunit complex, which catalyzes the exchange of GDP for GTP on the eukaryotic initiation factor 2 (eIF2) complex gamma subunit . Its guanine nucleotide exchange factor activity is repressed when bound to eIF2 complex phosphorylated on the alpha subunit, thereby limiting the amount of methionyl-initiator methionine tRNA available to the ribosome and consequently global translation is repressed .

APPLICATION

To ensure optimal assay performance, AREX recommends conducting reagent titration tailored to each testing system for optimal detection results.

WB	1:500 - 1:1000
IF/ICC	1:10 - 1:50
FC	1:10 - 1:50

*Results are sample-specific. Please refer to your local assay conditions and test parameters for reference.

PRODUCT OVERVIEW

Description	Mouse monoclonal antibody to EIF2B3
Specificity	Recognizes endogenous levels of EIF2B3 protein.
Antibody Type	Primary antibody
Immunogen	KLH-conjugated synthetic peptide encompassing a sequence within the center region of human EIF2B3. The exact sequence is proprietary.
Purification	This antibody is purified through a protein G column.
Molecular Weight	Predicted: 50 kD; Observed: 55 kD
Form/Buffer	Mouse IgG1 kappa. Liquid in PBS, pH 7.3, 30% glycerol, and 0.01% sodium azide.
Alternative Names	Translation initiation factor eIF-2B subunit gamma; eIF-2B GDP-GTP exchange factor subunit gamma
Gene Symbol	EIF2B3
Entrez Gene	8891(Human)
SwissProt	Q9NR50(Human)

*AREX continuously optimizes our products. Webpage content may not reflect the latest updates. For inquiries, please contact info@arexbio.com or your local distributor.

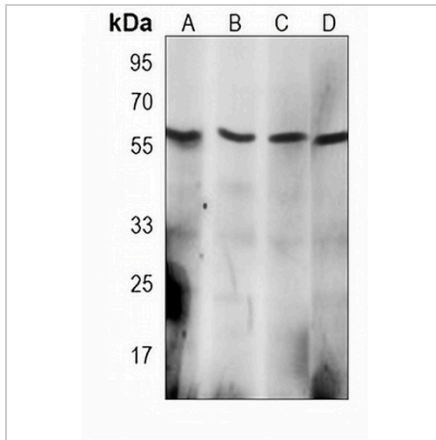
*Clone Number, Reactivity, Source/Host and Clonality can be found in the product name and Key Features section above.

DATASHEET

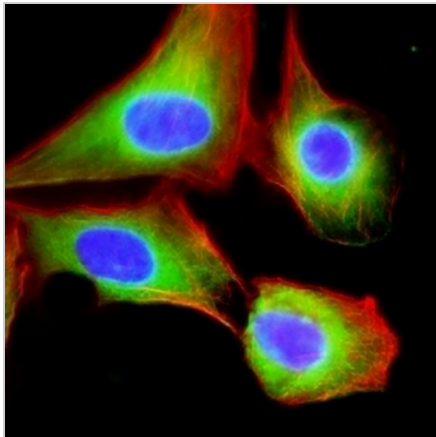
EIF2B3 Mouse Monoclonal Antibody(C4018)

CAT. NO. AMA03630

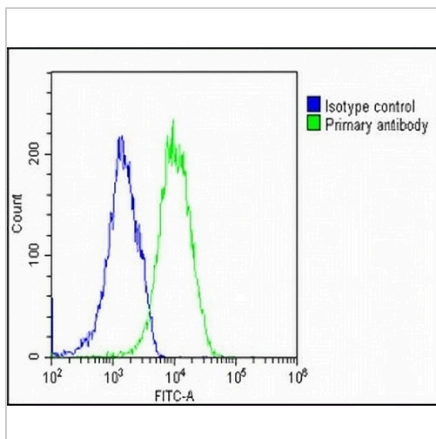
DATA



Western blot analysis of EIF2B3 expression in HL60 (A), MCF7 (B), U2OS (C), K562 (D) whole cell lysates. (Predicted band size: 50 kD; Observed band size: 55 kD)



Immunofluorescent analysis of EIF2B3 staining in U2OS cells. Formalin-fixed cells were permeabilized with 0.1% Triton X-100 in TBS for 5-10 minutes and blocked with 3% BSA-PBS for 30 minutes at room temperature. Cells were probed with the primary antibody in 3% BSA-PBS and incubated overnight at 4 °C in a humidified chamber. Cells were washed with PBST and incubated with a AREX® Fluor 488 -conjugated secondary antibody (green) in PBS at room temperature in the dark. Phalloidin - AREX® Fluor 555 was used to stain Actin filaments (red). DAPI was used to stain the cell nuclei (blue).



Flow cytometric analysis of U2OS cells using Anti-EIF2B3 Antibody. The cells were fixed with 2% paraformaldehyde (10 min) and then permeabilized with 90% methanol for 10 min. The cells were incubated in 2% bovine serum albumin to block non-specific protein-protein interactions followed by the antibody at 37 °C for 60 min. The secondary antibody Goat Anti-Mouse IgG (H&L) - AREX® Fluor 488 was incubated at 37 °C for 40 min. Isotype control antibody (blue line) was used under the same condition.

STORAGE

Store at 4°C short term. For long term storage, store at -20°C, avoiding freeze/thaw cycles.

NOTE

For Research Use Only. Not for diagnostic, therapeutics, prophylactic or in vivo use.