

DATASHEET

GDE1 Mouse Monoclonal Antibody(C4026)

CAT. NO. AMA03638

KEY FEATURES

Target	GDE1	Source / Host	Mouse
Reactivity	Human	Clonality	Monoclonal
Applications	WB	Conjugation	Unconjugated
Form / Buffer	Mouse IgG1 kappa. Liquid in PBS, pH 7.3, 30% glycerol, and 0.01% sodium azide.	Storage	at-20°C

BACKGROUND

Hydrolyzes the phosphodiester bond of glycerophosphodiester such as glycerophosphoinositol (GroPIs) and glycerophosphoethanolamine (GroPEth), to yield a glycerol phosphate and an alcohol . Hydrolyzes glycerophospho-N- acylethanolamines to N-acylethanolamines in the brain and participates in bioactive N-acylethanolamine biosynthesis such as anandamide (an endocannabinoid), N-palmitoylethanolamine (an anti-inflammatory), and N-oleoylethanolamine (an anorexic). In addition, has a lysophospholipase D activity by hydrolyzing N-acyl-lysoplasmylethanolamine (N-acyl-lysoPIsEt) to N-acylethanolamine. However lysophospholipase D activity is lower than glycerophosphodiester phosphodiesterase activity . Has little or no activity towards glycerophosphocholine .

APPLICATION

To ensure optimal assay performance, AREX recommends conducting reagent titration tailored to each testing system for optimal detection results.

WB	1:500 - 1:1000
----	----------------

*Results are sample-specific. Please refer to your local assay conditions and test parameters for reference.

PRODUCT OVERVIEW

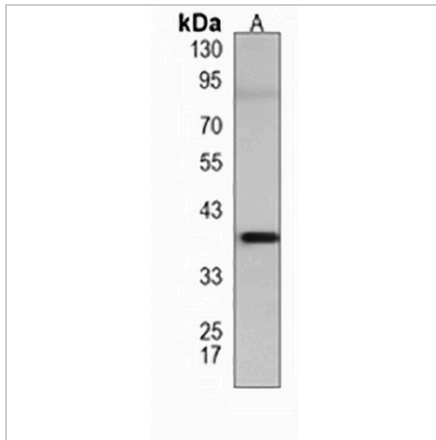
Description	Mouse monoclonal antibody to GDE1
Specificity	Recognizes endogenous levels of GDE1 protein.
Antibody Type	Primary antibody
Immunogen	Recombinant fusion protein of human GDE1. The exact sequence is proprietary.
Purification	This antibody is purified through a protein G column.
Molecular Weight	Predicted: 37 kD; Observed: 38 kD
Form/Buffer	Mouse IgG1 kappa. Liquid in PBS, pH 7.3, 30% glycerol, and 0.01% sodium azide.
Alternative Names	MIR16; Glycerophosphodiester phosphodiesterase 1; Membrane-interacting protein of RGS16; RGS16-interacting membrane protein
Gene Symbol	GDE1
Entrez Gene	51573(Human)
SwissProt	Q9NZC3(Human)

*AREX continuously optimizes our products. Webpage content may not reflect the latest updates. For inquiries, please contact info@arexbio.com or your local distributor.

*Clone Number, Reactivity, Source/Host and Clonality can be found in the product name and Key Features section above.

DATASHEET**GDE1 Mouse Monoclonal Antibody(C4026)**

CAT. NO. AMA03638

DATA

Western blot analysis of GDE1 expression in human brain (A) whole cell lysates.
(Predicted band size: 37 kD; Observed band size: 38 kD)

STORAGE

Store at 4°C short term. For long term storage, store at -20°C, avoiding freeze/thaw cycles.

NOTE

For Research Use Only. Not for diagnostic, therapeutics, prophylactic or in vivo use.