

DATASHEET

NLK Mouse Monoclonal Antibody(C4030)

CAT. NO. AMA03642

KEY FEATURES

Target	NLK	Source / Host	Mouse
Reactivity	Human	Clonality	Monoclonal
Applications	WB	Conjugation	Unconjugated
Form / Buffer	Mouse IgG2a. Liquid in PBS, pH 7.3, 30% glycerol, and 0.01% sodium azide.	Storage	at-20°C

BACKGROUND

Serine/threonine-protein kinase that regulates a number of transcription factors with key roles in cell fate determination . Positive effector of the non-canonical Wnt signaling pathway, acting downstream of WNT5A, MAP3K7/TAK1 and HIPK2 . Negative regulator of the canonical Wnt/beta-catenin signaling pathway . Binds to and phosphorylates TCF7L2/TCF4 and LEF1, promoting the dissociation of the TCF7L2/LEF1/beta-catenin complex from DNA, as well as the ubiquitination and subsequent proteolysis of LEF1 . Together these effects inhibit the transcriptional activation of canonical Wnt/beta-catenin target genes . Negative regulator of the Notch signaling pathway .

APPLICATION

To ensure optimal assay performance, AREX recommends conducting reagent titration tailored to each testing system for optimal detection results.

WB	1:500 - 1:1000
----	----------------

*Results are sample-specific. Please refer to your local assay conditions and test parameters for reference.

PRODUCT OVERVIEW

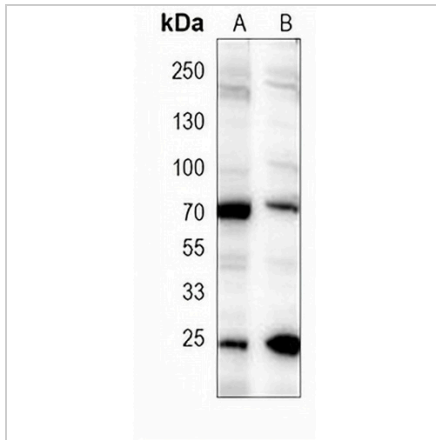
Description	Mouse monoclonal antibody to NLK
Specificity	Recognizes endogenous levels of NLK protein.
Antibody Type	Primary antibody
Immunogen	Recombinant fusion protein of human NLK. The exact sequence is proprietary.
Purification	This antibody is purified through a protein G column.
Molecular Weight	Predicted: 58 kD; Observed: 68 kD
Form/Buffer	Mouse IgG2a. Liquid in PBS, pH 7.3, 30% glycerol, and 0.01% sodium azide.
Alternative Names	LAK1; Serine/threonine-protein kinase NLK; Nemo-like kinase; Protein LAK1
Gene Symbol	NLK
Entrez Gene	51701(Human)
SwissProt	Q9UBE8(Human)

*AREX continuously optimizes our products. Webpage content may not reflect the latest updates. For inquiries, please contact info@arexbio.com or your local distributor.

*Clone Number, Reactivity, Source/Host and Clonality can be found in the product name and Key Features section above.

DATASHEET**NLK Mouse Monoclonal Antibody(C4030)**

CAT. NO. AMA03642

DATA

Western blot analysis of NLK expression in SiHa (A), HeLa (B) whole cell lysates. (Predicted band size: 58 kD; Observed band size: 68 kD)

STORAGE

Store at 4°C short term. For long term storage, store at -20°C, avoiding freeze/thaw cycles.

NOTE

For Research Use Only. Not for diagnostic, therapeutics, prophylactic or in vivo use.