

**DATASHEET**

**TCF1 alpha Mouse Monoclonal Antibody(C4037)**

CAT. NO. AMA03649

**KEY FEATURES**

Target	TCF1 alpha	Source / Host	Mouse
Reactivity	Human	Clonality	Monoclonal
Applications	WB	Conjugation	Unconjugated
Form / Buffer	Mouse IgG1 kappa. Liquid in PBS, pH 7.3, 30% glycerol, and 0.01% sodium azide.	Storage	at-20°C

**BACKGROUND**

Transcription factor that binds DNA in a sequence-specific manner . Participates in the Wnt signaling pathway . Activates transcription of target genes in the presence of CTNNB1 and EP300 . PIAG antagonizes both Wnt-dependent and Wnt-independent activation by LEF1 . TLE1, TLE2, TLE3 and TLE4 repress transactivation mediated by LEF1 and CTNNB1 . Regulates T-cell receptor alpha enhancer function . Required for IL17A expressing gamma-delta T-cell maturation and development, via binding to regulator loci of BLK to modulate expression . Acts as a positive regulator of odontoblast differentiation during mesenchymal tooth germ formation, expression is repressed during the bell stage by MSX1-mediated inhibition of CTNNB1 signaling .

**APPLICATION**

To ensure optimal assay performance, AREX recommends conducting reagent titration tailored to each testing system for optimal detection results.

WB	1:1000 - 1:2000
----	-----------------

\*Results are sample-specific. Please refer to your local assay conditions and test parameters for reference.

**PRODUCT OVERVIEW**

Description	Mouse monoclonal antibody to TCF1 alpha
Specificity	Recognizes endogenous levels of TCF1 alpha protein.
Antibody Type	Primary antibody
Immunogen	Recombinant fusion protein of human TCF1 alpha. The exact sequence is proprietary.
Purification	This antibody is purified through a protein G column.
Molecular Weight	Predicted: 44 kD; Observed: 58 kD
Form/Buffer	Mouse IgG1 kappa. Liquid in PBS, pH 7.3, 30% glycerol, and 0.01% sodium azide.
Alternative Names	Lymphoid enhancer-binding factor 1; LEF-1; T cell-specific transcription factor 1-alpha; TCF1-alpha
Gene Symbol	LEF1
Entrez Gene	51176(Human)
SwissProt	Q9UJU2(Human)

\*AREX continuously optimizes our products. Webpage content may not reflect the latest updates. For inquiries, please contact [info@arexbio.com](mailto:info@arexbio.com) or your local distributor.

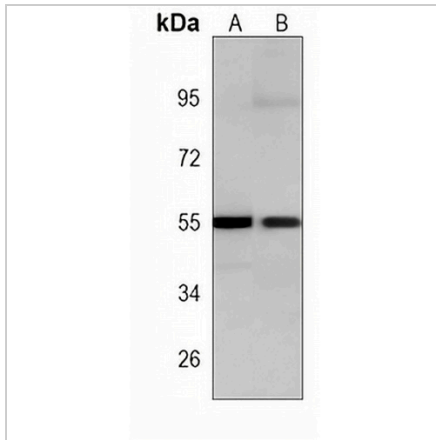
\*Clone Number, Reactivity, Source/Host and Clonality can be found in the product name and Key Features section above.

**DATASHEET**

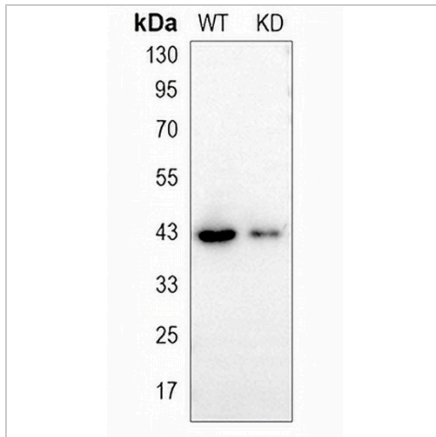
**TCF1 alpha Mouse Monoclonal Antibody(C4037)**

CAT. NO. AMA03649

**DATA**



Western blot analysis of TCF1 alpha expression in SW480 (A), Jurkat (B) whole cell lysates. (Predicted band size: 44 kD; Observed band size: 58 kD)



Western blot analysis of TCF1 alpha expression in wild type (WT) and knockdown (KD) HAP1 cell lysates.

**STORAGE**

Store at 4°C short term. For long term storage, store at -20°C, avoiding freeze/thaw cycles.

**NOTE**

For Research Use Only. Not for diagnostic, therapeutics, prophylactic or in vivo use.