

**DATASHEET**

**Integrin alpha 11 Mouse Monoclonal Antibody(C4038)**

CAT. NO. AMA03650

**KEY FEATURES**

|               |   |               |              |
|---------------|---|---------------|--------------|
| Target        | Integrin alpha 11   | Source / Host | Mouse        |
| Reactivity    | Human   | Clonality     | Monoclonal   |
| Applications  | WB  | Conjugation   | Unconjugated |
| Form / Buffer | Mouse IgG2b kappa. Liquid in PBS, pH 7.3, 30% glycerol, and 0.01% sodium azide. | Storage       | at-20°C      |

**BACKGROUND**

Integrin alpha-11/beta-1 is a receptor for collagen.

**APPLICATION**

To ensure optimal assay performance, AREX recommends conducting reagent titration tailored to each testing system for optimal detection results.

|    |                |
|----|----------------|
| WB | 1:500 - 1:1000 |
|----|----------------|

\*Results are sample-specific. Please refer to your local assay conditions and test parameters for reference.

**PRODUCT OVERVIEW**

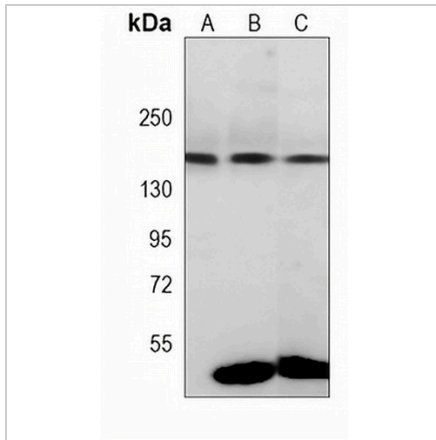
|                   |  |
|-------------------|--|
| Description       | Mouse monoclonal antibody to Integrin alpha 11   |
| Specificity       | Recognizes endogenous levels of Integrin alpha 11 protein.   |
| Antibody Type     | Primary antibody   |
| Immunogen         | KLH-conjugated synthetic peptide encompassing a sequence within the center region of human Integrin alpha 11. The exact sequence is proprietary. |
| Purification      | This antibody is purified through a protein G column.  |
| Molecular Weight  | Predicted: 133 kD; Observed: 160 kD  |
| Form/Buffer       | Mouse IgG2b kappa. Liquid in PBS, pH 7.3, 30% glycerol, and 0.01% sodium azide.  |
| Alternative Names | Integrin alpha-11  |
| Gene Symbol       | ITGA11   |
| Entrez Gene       | 22801(Human)   |
| SwissProt         | Q9UKX5(Human)  |

\*AREX continuously optimizes our products. Webpage content may not reflect the latest updates. For inquiries, please contact [info@arexbio.com](mailto:info@arexbio.com) or your local distributor.

\*Clone Number, Reactivity, Source/Host and Clonality can be found in the product name and Key Features section above.

**DATASHEET****Integrin alpha 11 Mouse Monoclonal Antibody(C4038)**

CAT. NO. AMA03650

**DATA**

Western blot analysis of Integrin alpha 11 expression in HeLa (A), A549 (B), human uterus (C) whole cell lysates. (Predicted band size: 133 kD; Observed band size: 160 kD)

**STORAGE**

Store at 4°C short term. For long term storage, store at -20°C, avoiding freeze/thaw cycles.

**NOTE**

For Research Use Only. Not for diagnostic, therapeutics, prophylactic or in vivo use.