

**DATASHEET**

**RAB21 Mouse Monoclonal Antibody(C4040)**

CAT. NO. AMA03652

**KEY FEATURES**

Target	RAB21	Source / Host	Mouse
Reactivity	Human, Monkey	Clonality	Monoclonal
Applications	WB	Conjugation	Unconjugated
Form / Buffer	Mouse IgG2b kappa. Liquid in PBS, pH 7.3, 30% glycerol, and 0.01% sodium azide.	Storage	at-20°C

**BACKGROUND**

The small GTPases Rab are key regulators of intracellular membrane trafficking, from the formation of transport vesicles to their fusion with membranes. Rabs cycle between an inactive GDP-bound form and an active GTP-bound form that is able to recruit to membranes different sets of downstream effectors directly responsible for vesicle formation, movement, tethering and fusion . RAB21 is involved in membrane trafficking control . During the mitosis of adherent cells, controls the endosomal trafficking of integrins which is required for the successful completion of cytokinesis . Regulates integrin internalization and recycling, but does not influence the traffic of endosomally translocated receptors in general . As a result, may regulate cell adhesion and migration .

**APPLICATION**

To ensure optimal assay performance, AREX recommends conducting reagent titration tailored to each testing system for optimal detection results.

WB	1:500 - 1:1000
----	----------------

\*Results are sample-specific. Please refer to your local assay conditions and test parameters for reference.

**PRODUCT OVERVIEW**

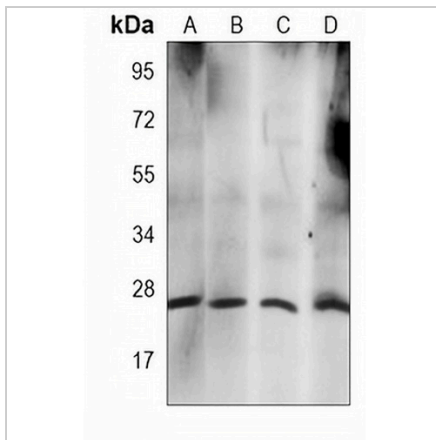
Description	Mouse monoclonal antibody to RAB21
Specificity	Recognizes endogenous levels of RAB21 protein.
Antibody Type	Primary antibody
Immunogen	Recombinant fusion protein of human RAB21. The exact sequence is proprietary.
Purification	This antibody is purified through a protein G column.
Molecular Weight	Predicted: 24 kD; Observed: 24 kD
Form/Buffer	Mouse IgG2b kappa. Liquid in PBS, pH 7.3, 30% glycerol, and 0.01% sodium azide.
Alternative Names	KIAA0118; Ras-related protein Rab-21
Gene Symbol	RAB21
Entrez Gene	23011(Human)
SwissProt	Q9UL25(Human)

\*AREX continuously optimizes our products. Webpage content may not reflect the latest updates. For inquiries, please contact [info@arexbio.com](mailto:info@arexbio.com) or your local distributor.

\*Clone Number, Reactivity, Source/Host and Clonality can be found in the product name and Key Features section above.

**DATASHEET****RAB21 Mouse Monoclonal Antibody(C4040)**

CAT. NO. AMA03652

**DATA**

Western blot analysis of RAB21 expression in MCF7 (A), A431 (B), HeLa (C), COS7 (D) whole cell lysates. (Predicted band size: 24 kD; Observed band size: 24 kD)

**STORAGE**

Store at 4°C short term. For long term storage, store at -20°C, avoiding freeze/thaw cycles.

**NOTE**

For Research Use Only. Not for diagnostic, therapeutics, prophylactic or in vivo use.