

**DATASHEET**

**Syndapin-2 Mouse Monoclonal Antibody(C4045)**

CAT. NO. AMA03657

**KEY FEATURES**

Target	Syndapin-2	Source / Host	Mouse
Reactivity	Human, Mouse	Clonality	Monoclonal
Applications	WB	Conjugation	Unconjugated
Form / Buffer	Mouse IgG1 kappa. Liquid in PBS, pH 7.3, 30% glycerol, and 0.01% sodium azide.	Storage	at-20°C

**BACKGROUND**

Regulates the morphogenesis and endocytosis of caveolae . Lipid-binding protein that is able to promote the tubulation of the phosphatidic acid-containing membranes it preferentially binds. Plays a role in intracellular vesicle-mediated transport. Involved in the endocytosis of cell-surface receptors like the EGF receptor, contributing to its internalization in the absence of EGF stimulus . Essential for endothelial organization in sprouting angiogenesis, modulates CDH5-based junctions. Facilitates endothelial front-rear polarity during migration by recruiting EHD4 and MICALL1 to asymmetric adherens junctions between leader and follower cells .

**APPLICATION**

To ensure optimal assay performance, AREX recommends conducting reagent titration tailored to each testing system for optimal detection results.

WB	1:500 - 1:1000
----	----------------

\*Results are sample-specific. Please refer to your local assay conditions and test parameters for reference.

**PRODUCT OVERVIEW**

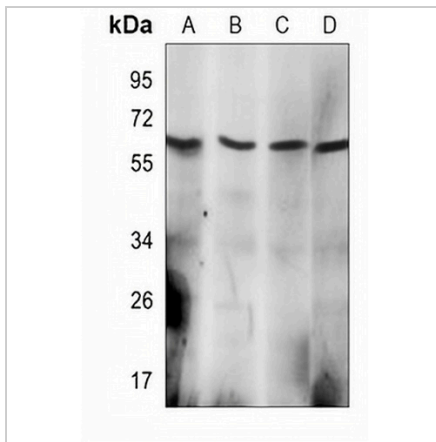
Description	Mouse monoclonal antibody to Syndapin-2
Specificity	Recognizes endogenous levels of Syndapin-2 protein.
Antibody Type	Primary antibody
Immunogen	Recombinant fusion protein of human Syndapin-2. The exact sequence is proprietary.
Purification	This antibody is purified through a protein G column.
Molecular Weight	Predicted: 55 kD; Observed: 56 kD
Form/Buffer	Mouse IgG1 kappa. Liquid in PBS, pH 7.3, 30% glycerol, and 0.01% sodium azide.
Alternative Names	Protein kinase C and casein kinase substrate in neurons protein 2; Syndapin-2; Syndapin-II
Gene Symbol	PACSIN2
Entrez Gene	11252(Human); 23970(Mouse)
SwissProt	Q9UNF0(Human); Q9WVE8(Mouse)

\*AREX continuously optimizes our products. Webpage content may not reflect the latest updates. For inquiries, please contact [info@arexbio.com](mailto:info@arexbio.com) or your local distributor.

\*Clone Number, Reactivity, Source/Host and Clonality can be found in the product name and Key Features section above.

**DATASHEET****Syndapin-2 Mouse Monoclonal Antibody(C4045)**

CAT. NO. AMA03657

**DATA**

Western blot analysis of Syndapin-2 expression in Daudi (A), HL60 (B), human brain (C), mouse brain (D) whole cell lysates. (Predicted band size: 55 kD; Observed band size: 56 kD)

**STORAGE**

Store at 4°C short term. For long term storage, store at -20°C, avoiding freeze/thaw cycles.

**NOTE**

For Research Use Only. Not for diagnostic, therapeutics, prophylactic or in vivo use.