

DATASHEET

MO25 Mouse Monoclonal Antibody(C4050)

CAT. NO. AMA03662

KEY FEATURES

Target	MO25	Source / Host	Mouse
Reactivity	Human, Mouse	Clonality	Monoclonal
Applications	WB	Conjugation	Unconjugated
Form / Buffer	Mouse IgG1 kappa. Liquid in PBS, pH 7.3, 30% glycerol, and 0.01% sodium azide.	Storage	at-20°C

BACKGROUND

Component of a complex that binds and activates STK11/LKB1. In the complex, required to stabilize the interaction between CAB39/MO25 (CAB39/MO25alpha or CAB39L/MO25beta) and STK11/LKB1.

APPLICATION

To ensure optimal assay performance, AREX recommends conducting reagent titration tailored to each testing system for optimal detection results.

WB	1:500 - 1:1000
----	----------------

*Results are sample-specific. Please refer to your local assay conditions and test parameters for reference.

PRODUCT OVERVIEW

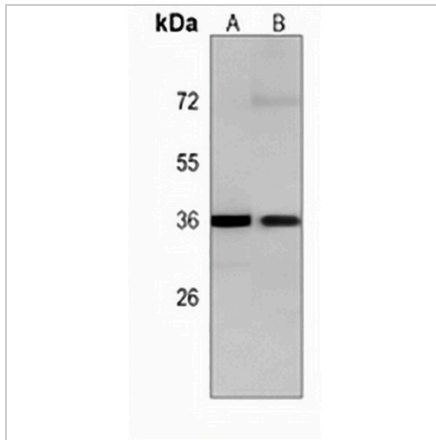
Description	Mouse monoclonal antibody to MO25
Specificity	Recognizes endogenous levels of MO25 protein.
Antibody Type	Primary antibody
Immunogen	Recombinant fusion protein of human MO25. The exact sequence is proprietary.
Purification	This antibody is purified through a protein G column.
Molecular Weight	Predicted: 39 kD; Observed: 36 kD
Form/Buffer	Mouse IgG1 kappa. Liquid in PBS, pH 7.3, 30% glycerol, and 0.01% sodium azide.
Alternative Names	MO25; Calcium-binding protein 39; MO25alpha; Protein Mo25
Gene Symbol	CAB39
Entrez Gene	51719(Human); 12283(Mouse)
SwissProt	Q9Y376(Human); Q06138(Mouse)

*AREX continuously optimizes our products. Webpage content may not reflect the latest updates. For inquiries, please contact info@arexbio.com or your local distributor.

*Clone Number, Reactivity, Source/Host and Clonality can be found in the product name and Key Features section above.

DATASHEET**MO25 Mouse Monoclonal Antibody(C4050)**

CAT. NO. AMA03662

DATA

Western blot analysis of MO25 expression in K562 (A), mouse brain (B) whole cell lysates. (Predicted band size: 39 kD; Observed band size: 36 kD)

STORAGE

Store at 4°C short term. For long term storage, store at -20°C, avoiding freeze/thaw cycles.

NOTE

For Research Use Only. Not for diagnostic, therapeutics, prophylactic or in vivo use.