

**DATASHEET**
**CAPN6 Mouse Monoclonal Antibody(C4060)**
**CAT. NO. AMA03672**
**KEY FEATURES**

Target	CAPN6	Source / Host	Mouse
Reactivity	Mouse	Clonality	Monoclonal
Applications	WB	Conjugation	Unconjugated
Form / Buffer	Mouse IgG1. Liquid in PBS, pH 7.3, 30% glycerol, and 0.01% sodium azide.	Storage	at-20°C

**BACKGROUND**

Calpains are ubiquitous, well-conserved family of calcium-dependent, cysteine proteases. The calpain proteins are heterodimers consisting of an invariant small subunit and variable large subunits. The large subunit possesses a cysteine protease domain, and both subunits possess calcium-binding domains. Calpains have been implicated in neurodegenerative processes, as their activation can be triggered by calcium influx and oxidative stress. The protein encoded by this gene is highly expressed in the placenta. Its C-terminal region lacks any homology to the calmodulin-like domain of other calpains. The protein lacks critical active site residues and thus is suggested to be proteolytically inactive.

**APPLICATION**

To ensure optimal assay performance, AREX recommends conducting reagent titration tailored to each testing system for optimal detection results.

WB	1:500 - 1:1000
FC	1:10 - 1:50

\*Results are sample-specific. Please refer to your local assay conditions and test parameters for reference.

**PRODUCT OVERVIEW**

Description	Mouse monoclonal antibody to CAPN6
Specificity	Recognizes endogenous levels of CAPN6 protein.
Antibody Type	Primary antibody
Immunogen	Recombinant fusion protein of human CAPN6. The exact sequence is proprietary.
Purification	This antibody is purified through a protein G column.
Molecular Weight	Predicted: 74 kD; Observed: 75 kD
Form/Buffer	Mouse IgG1. Liquid in PBS, pH 7.3, 30% glycerol, and 0.01% sodium azide.
Alternative Names	CALPM; CANPX; Calpain-6; Calpain-like protease X-linked; Calpamodulin; CalpM
Gene Symbol	CAPN6
Entrez Gene	12338(Mouse)
SwissProt	O35646(Mouse)

\*AREX continuously optimizes our products. Webpage content may not reflect the latest updates. For inquiries, please contact [info@arexbio.com](mailto:info@arexbio.com) or your local distributor.

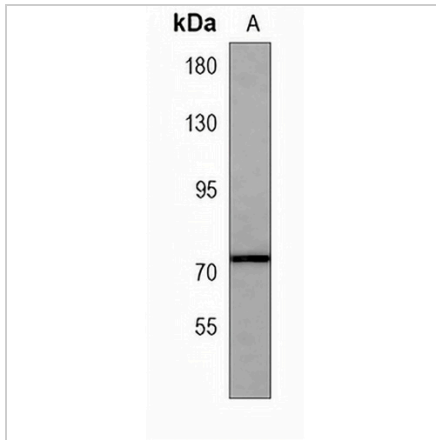
\*Clone Number, Reactivity, Source/Host and Clonality can be found in the product name and Key Features section above.

**DATASHEET**

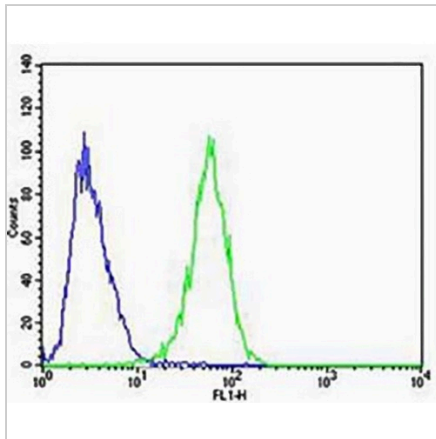
**CAPN6 Mouse Monoclonal Antibody(C4060)**

CAT. NO. AMA03672

**DATA**



Western blot analysis of CAPN6 expression in human placenta (A) whole cell lysates. (Predicted band size: 74 kD; Observed band size: 75 kD)



Flow cytometric analysis of A549 cells using Anti-CAPN6 Antibody. The cells were fixed with 2% paraformaldehyde (10 min) and then permeabilized with 90% methanol for 10 min. The cells were incubated in 2% bovine serum albumin to block non-specific protein-protein interactions followed by the antibody at 37 °C for 60 min. The secondary antibody Goat Anti-Mouse IgG (H&L) - AREX® Fluor 488 was incubated at 37 °C for 40 min. Isotype control antibody (blue line) was used under the same condition.

**STORAGE**

Store at 4°C short term. For long term storage, store at -20°C, avoiding freeze/thaw cycles.

**NOTE**

For Research Use Only. Not for diagnostic, therapeutics, prophylactic or in vivo use.