

## DATASHEET

# PLM (Phospho-S68) Mouse Monoclonal Antibody(C4061)

CAT. NO. AMA03673

### KEY FEATURES

Target	PLM (Phospho-S68)	Source / Host	Mouse
Reactivity	Mouse	Clonality	Monoclonal
Applications	WB	Conjugation	Unconjugated
Form / Buffer	Mouse IgG1. Liquid in PBS, pH 7.3, 30% glycerol, and 0.01% sodium azide.	Storage	at-20°C

### BACKGROUND

This gene encodes a member of a family of small membrane proteins that share a 35-amino acid signature sequence domain, beginning with the sequence PFXVD and containing 7 invariant and 6 highly conserved amino acids. The approved human gene nomenclature for the family is FXYD-domain containing ion transport regulator. Mouse FXYD5 has been termed RIC (Related to Ion Channel). FXYD2, also known as the gamma subunit of the Na,K-ATPase, regulates the properties of that enzyme. FXYD1 (phospholemman), FXYD2 (gamma), FXYD3 (MAT-8), FXYD4 (CHIF), and FXYD5 (RIC) have been shown to induce channel activity in experimental expression systems.

### APPLICATION

To ensure optimal assay performance, AREX recommends conducting reagent titration tailored to each testing system for optimal detection results.

WB	1:500 - 1:1000
----	----------------

\*Results are sample-specific. Please refer to your local assay conditions and test parameters for reference.

### PRODUCT OVERVIEW

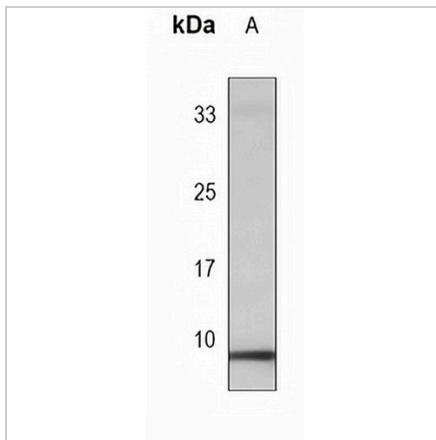
Description	Mouse monoclonal antibody to PLM (Phospho-S68)
Specificity	Recognizes endogenous levels of PLM protein only when phosphorylated at S68.
Antibody Type	Primary antibody
Immunogen	KLH-conjugated synthetic phosphopeptide corresponding to residues surrounding S68 of human PLM protein. The exact sequence is proprietary.
Purification	This antibody is purified through a protein G column.
Molecular Weight	Predicted: 10 kD; Observed: 8 kD
Form/Buffer	Mouse IgG1. Liquid in PBS, pH 7.3, 30% glycerol, and 0.01% sodium azide.
Alternative Names	PLM; Phospholemman; FXYD domain-containing ion transport regulator 1
Gene Symbol	FXYD1
Entrez Gene	56188(Mouse)
SwissProt	Q9Z239(Mouse)

\*AREX continuously optimizes our products. Webpage content may not reflect the latest updates. For inquiries, please contact [info@arexbio.com](mailto:info@arexbio.com) or your local distributor.

\*Clone Number, Reactivity, Source/Host and Clonality can be found in the product name and Key Features section above.

**DATASHEET****PLM (Phospho-S68) Mouse Monoclonal Antibody(C4061)**

CAT. NO. AMA03673

**DATA**

Western blot analysis of PLM (Phospho-S68) expression in 293 transfected with a plasmid encoding PLM (A) whole cell lysates. (Predicted band size: 10 kD; Observed band size: 8 kD)

**STORAGE**

Store at 4°C short term. For long term storage, store at -20°C, avoiding freeze/thaw cycles.

**NOTE**

For Research Use Only. Not for diagnostic, therapeutics, prophylactic or in vivo use.