

**DATASHEET**

**CD48 Mouse Monoclonal Antibody(156-4H9)**

CAT. NO. AMA03681

**KEY FEATURES**

Target	CD48	Source / Host	Mouse
Reactivity	Human	Clonality	Monoclonal
Applications	IF/ICC, FC	Conjugation	Unconjugated
Form / Buffer	Mouse IgG1. Liquid in PBS, pH 7.3, and 0.02% sodium azide.	Storage	at-20°C

**BACKGROUND**

Glycosylphosphatidylinositol (GPI)-anchored cell surface glycoprotein that interacts via its N-terminal immunoglobulin domain with cell surface receptors including CD244/2B4 or CD2 to regulate immune cell function and activation -anchored cell surface glycoprotein that interacts via its N-terminal immunoglobulin domain with cell surface receptors including CD244/2B4 or CD2 to regulate immune cell function and activation . Participates in T-cell signaling transduction by associating with CD2 and efficiently bringing the Src family protein kinase LCK and LAT to the TCR/CD3 complex . In turn, promotes LCK phosphorylation and subsequent activation .

**APPLICATION**

To ensure optimal assay performance, AREX recommends conducting reagent titration tailored to each testing system for optimal detection results.

**PRODUCT OVERVIEW**

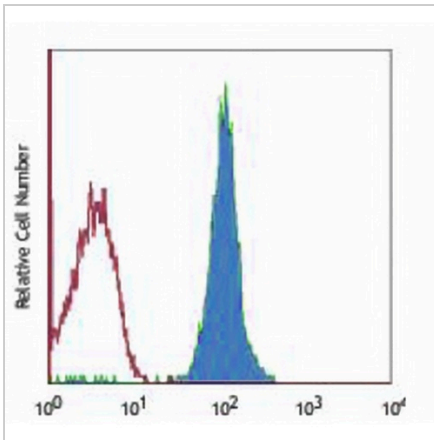
Description	Mouse monoclonal antibody to CD48
Specificity	Recognizes human CD48
Antibody Type	Primary antibody
Immunogen	Native purified human CD48.
Purification	The antibody was purified by affinity chromatography.
Form/Buffer	Mouse IgG1. Liquid in PBS, pH 7.3, and 0.02% sodium azide.
Alternative Names	BCM1; BLAST1; CD48 antigen; B-lymphocyte activation marker BLAST-1; BCM1 surface antigen; Leukocyte antigen MEM-102; SLAM family member 2; SLAMF2; Signaling lymphocytic activation molecule 2; TCT.1; CD antigen CD48
Gene Symbol	CD48
Entrez Gene	962(Human)
SwissProt	P09326(Human)

\*AREX continuously optimizes our products. Webpage content may not reflect the latest updates. For inquiries, please contact [info@arexbio.com](mailto:info@arexbio.com) or your local distributor.

\*Clone Number, Reactivity, Source/Host and Clonality can be found in the product name and Key Features section above.

**DATASHEET****CD48 Mouse Monoclonal Antibody(156-4H9)**

CAT. NO. AMA03681

**DATA**

Flow cytometric analysis of human peripheral blood lymphocytes using Anti-CD48 Antibody, followed by anti-mouse IgG PE.

**STORAGE**

Store at 4°C short term. For long term storage, store at -20°C, avoiding freeze/thaw cycles.

**NOTE**

For Research Use Only. Not for diagnostic, therapeutics, prophylactic or in vivo use.