

DATASHEET

CD13 Mouse Monoclonal Antibody(22A5)

CAT. NO. AMA03699

KEY FEATURES

Target	CD13	Source / Host	Mouse
Reactivity	Human	Clonality	Monoclonal
Applications	WB, IF/ICC, FC	Conjugation	Unconjugated
Form / Buffer	Mouse IgG2a. Liquid in PBS, pH 7.3, and 0.02% sodium azide.	Storage	at-20°C

BACKGROUND

Broad specificity aminopeptidase which plays a role in the final digestion of peptides generated from hydrolysis of proteins by gastric and pancreatic proteases. Also involved in the processing of various peptides including peptide hormones, such as angiotensin III and IV, neuropeptides, and chemokines. May also be involved the cleavage of peptides bound to major histocompatibility complex class II molecules of antigen presenting cells. May have a role in angiogenesis and promote cholesterol crystallization. May have a role in amino acid transport by acting as binding partner of amino acid transporter SLC6A19 and regulating its activity .

APPLICATION

To ensure optimal assay performance, AREX recommends conducting reagent titration tailored to each testing system for optimal detection results.

WB	1:500 - 1:1000
IF/ICC	1:50 - 1:200
FC	1:500 - 1:2000

*Results are sample-specific. Please refer to your local assay conditions and test parameters for reference.

PRODUCT OVERVIEW

Description	Mouse monoclonal antibody to CD13
Specificity	Recognizes human CD13
Antibody Type	Primary antibody
Immunogen	Native purified human CD13.
Purification	The antibody was purified by affinity chromatography.
Molecular Weight	Predicted: 109 kD; Observed: 160 kD
Form/Buffer	Mouse IgG2a. Liquid in PBS, pH 7.3, and 0.02% sodium azide.
Alternative Names	APN; CD13; PEPN; Aminopeptidase N; AP-N; hAPN; Alanyl aminopeptidase; Aminopeptidase M; AP-M; Microsomal aminopeptidase; Myeloid plasma membrane glycoprotein CD13; gp150; CD antigen CD13
Gene Symbol	ANPEP
Entrez Gene	290(Human)
SwissProt	P15144(Human)

*AREX continuously optimizes our products. Webpage content may not reflect the latest updates. For inquiries, please contact info@arexbio.com or your local distributor.

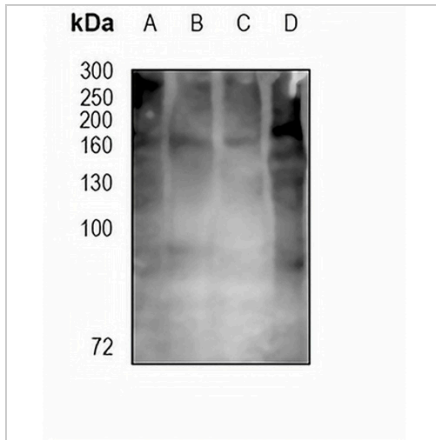
*Clone Number, Reactivity, Source/Host and Clonality can be found in the product name and Key Features section above.

DATASHEET

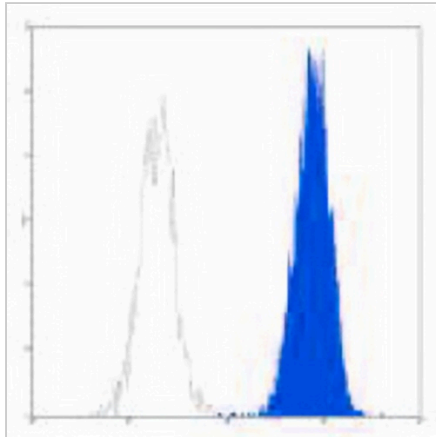
CD13 Mouse Monoclonal Antibody(22A5)

CAT. NO. AMA03699

DATA



Western blot analysis of CD13 expression in A2780 (A), U87 (B), A375 (C), mouse liver (D) whole cell lysates. (Predicted band size: 109 kD; Observed band size: 160 kD)



Flow cytometric analysis of human peripheral blood granulocytes using Anti-CD13 Antibody, followed by anti-mouse IgG PE.

STORAGE

Store at 4°C short term. For long term storage, store at -20°C, avoiding freeze/thaw cycles.

NOTE

For Research Use Only. Not for diagnostic, therapeutics, prophylactic or in vivo use.