

DATASHEET

CD28 Syrian Hamster Monoclonal Antibody(37.51)

CAT. NO. AMA03709

KEY FEATURES

Target	CD28	Source / Host	Syrian Hamster
Reactivity	Mouse	Clonality	Monoclonal
Applications	WB, IF/ICC, FC	Conjugation	Unconjugated
Form / Buffer	Syrian Hamster IgG. Liquid in PBS, pH 7.3, and 0.02% sodium azide.	Storage	at-20°C

BACKGROUND

The protein encoded by this gene is essential for T-cell proliferation and survival, cytokine production, and T-helper type-2 development. Several alternatively spliced transcript variants encoding different isoforms have been found for this gene.

APPLICATION

To ensure optimal assay performance, AREX recommends conducting reagent titration tailored to each testing system for optimal detection results.

WB	1:500 - 1:1000
IF/ICC	1:50 - 1:200
FC	1:500 - 1:2000

*Results are sample-specific. Please refer to your local assay conditions and test parameters for reference.

PRODUCT OVERVIEW

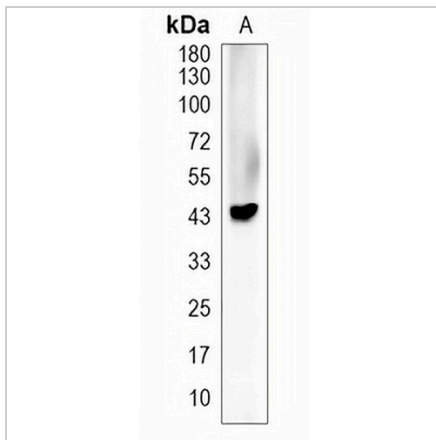
Description	Syrian Hamster monoclonal antibody to CD28
Specificity	Recognizes mouse CD28
Antibody Type	Primary antibody
Immunogen	C57BL/6 mouse T-cell lymphoma EL-4
Purification	The antibody was purified by affinity chromatography.
Molecular Weight	Predicted: 25 kD; Observed: 44 kD
Form/Buffer	Syrian Hamster IgG. Liquid in PBS, pH 7.3, and 0.02% sodium azide.
Alternative Names	T-cell-specific surface glycoprotein CD28; TP44; CD28
Gene Symbol	CD28
Entrez Gene	12487(Mouse)
SwissProt	P31041(Mouse)

*AREX continuously optimizes our products. Webpage content may not reflect the latest updates. For inquiries, please contact info@arexbio.com or your local distributor.

*Clone Number, Reactivity, Source/Host and Clonality can be found in the product name and Key Features section above.

DATASHEET**CD28 Syrian Hamster Monoclonal Antibody(37.51)**

CAT. NO. AMA03709

DATA

Western blot analysis of CD28 expression in mouse liver (A) whole cell lysates. (Predicted band size: 25 kD; Observed band size: 44 kD)

STORAGE

Store at 4°C short term. For long term storage, store at -20°C, avoiding freeze/thaw cycles.

NOTE

For Research Use Only. Not for diagnostic, therapeutics, prophylactic or in vivo use.