

DATASHEET

CD11a Mouse Monoclonal Antibody(38)

CAT. NO. AMA03710

KEY FEATURES

Target	CD11a	Source / Host	Mouse
Reactivity	Human	Clonality	Monoclonal
Applications	IF/ICC, FC	Conjugation	Unconjugated
Form / Buffer	Mouse IgG2a kappa. Liquid in PBS, pH 7.3, and 0.02% sodium azide.	Storage	at-20°C

BACKGROUND

Integrin ITGAL/ITGB2 is a receptor for ICAM1, ICAM2, ICAM3 and ICAM4 . Integrin ITGAL/ITGB2 is a receptor for F11R . Integrin ITGAL/ITGB2 is a receptor for the secreted form of ubiquitin-like protein ISG15; the interaction is mediated by ITGAL . Involved in a variety of immune phenomena including leukocyte-endothelial cell interaction, cytotoxic T-cell mediated killing, and antibody dependent killing by granulocytes and monocytes. Contributes to natural killer cell cytotoxicity . Involved in leukocyte adhesion and transmigration of leukocytes including T-cells and neutrophils . Acts as a platform at the immunological synapse to translate TCR engagement and density of the ITGAL ligand ICAM1 into graded adhesion .

APPLICATION

To ensure optimal assay performance, AREX recommends conducting reagent titration tailored to each testing system for optimal detection results.

IF/ICC	1:50 - 1:200
FC	1:500 - 1:2000

*Results are sample-specific. Please refer to your local assay conditions and test parameters for reference.

PRODUCT OVERVIEW

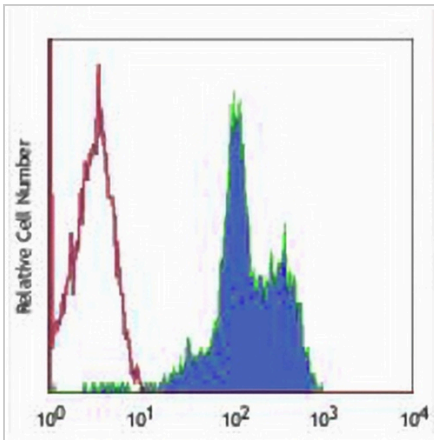
Description	Mouse monoclonal antibody to CD11a
Specificity	Recognizes human CD11a
Antibody Type	Primary antibody
Immunogen	Native purified human CD11a.
Purification	The antibody was purified by affinity chromatography.
Form/Buffer	Mouse IgG2a kappa. Liquid in PBS, pH 7.3, and 0.02% sodium azide.
Alternative Names	CD11A; Integrin alpha-L; CD11 antigen-like family member A; Leukocyte adhesion glycoprotein LFA-1 alpha chain; LFA-1A; Leukocyte function-associated molecule 1 alpha chain; CD antigen CD11a
Gene Symbol	ITGAL
Entrez Gene	3683(Human)
SwissProt	P20701(Human)

*AREX continuously optimizes our products. Webpage content may not reflect the latest updates. For inquiries, please contact info@arexbio.com or your local distributor.

*Clone Number, Reactivity, Source/Host and Clonality can be found in the product name and Key Features section above.

DATASHEET**CD11a Mouse Monoclonal Antibody(38)**

CAT. NO. AMA03710

DATA

Flow cytometric analysis of human peripheral blood granulocytes using Anti-CD11a Antibody, followed by anti-mouse IgG PE.

STORAGE

Store at 4°C short term. For long term storage, store at -20°C, avoiding freeze/thaw cycles.

NOTE

For Research Use Only. Not for diagnostic, therapeutics, prophylactic or in vivo use.