

DATASHEET

CD40 Mouse Monoclonal Antibody(3A8)

CAT. NO. AMA03712

KEY FEATURES

Target	CD40	Source / Host	Mouse
Reactivity	Human	Clonality	Monoclonal
Applications	IF/ICC, FC	Conjugation	Unconjugated
Form / Buffer	Mouse IgG2b. Liquid in PBS, pH 7.3, and 0.02% sodium azide.	Storage	at-20°C

BACKGROUND

Receptor for TNFSF5/CD40LG . Transduces TRAF6- and MAP3K8-mediated signals that activate ERK in macrophages and B cells, leading to induction of immunoglobulin secretion .

APPLICATION

To ensure optimal assay performance, AREX recommends conducting reagent titration tailored to each testing system for optimal detection results.

IF/ICC	1:50 - 1:200
FC	1:500 - 1:2000

*Results are sample-specific. Please refer to your local assay conditions and test parameters for reference.

PRODUCT OVERVIEW

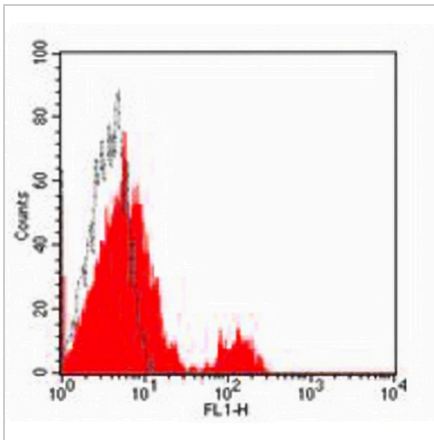
Description	Mouse monoclonal antibody to CD40
Specificity	Recognizes human CD40
Antibody Type	Primary antibody
Immunogen	Native purified human CD40.
Purification	The antibody was purified by affinity chromatography.
Form/Buffer	Mouse IgG2b. Liquid in PBS, pH 7.3, and 0.02% sodium azide.
Alternative Names	TNFRSF5; Tumor necrosis factor receptor superfamily member 5; B-cell surface antigen CD40; Bp50; CD40L receptor; CDw40; CD antigen CD40
Gene Symbol	CD40
Entrez Gene	958(Human)
SwissProt	P25942(Human)

*AREX continuously optimizes our products. Webpage content may not reflect the latest updates. For inquiries, please contact info@arexbio.com or your local distributor.

*Clone Number, Reactivity, Source/Host and Clonality can be found in the product name and Key Features section above.

DATASHEET**CD40 Mouse Monoclonal Antibody(3A8)**

CAT. NO. AMA03712

DATA

Flow cytometric analysis of human peripheral blood lymphocytes using Anti-CD40 Antibody, followed by anti-mouse IgG PE.

STORAGE

Store at 4°C short term. For long term storage, store at -20°C, avoiding freeze/thaw cycles.

NOTE

For Research Use Only. Not for diagnostic, therapeutics, prophylactic or in vivo use.