

DATASHEET

CD105 Mouse Monoclonal Antibody(43A3)

CAT. NO. AMA03717

KEY FEATURES

Target	CD105	Source / Host	Mouse
Reactivity	Human	Clonality	Monoclonal
Applications	IF/ICC, FC	Conjugation	Unconjugated
Form / Buffer	Mouse IgG1. Liquid in PBS, pH 7.3, and 0.02% sodium azide.	Storage	at-20°C

BACKGROUND

Vascular endothelium glycoprotein that plays an important role in the regulation of angiogenesis . Required for normal structure and integrity of adult vasculature . Regulates the migration of vascular endothelial cells . Required for normal extraembryonic angiogenesis and for embryonic heart development . May regulate endothelial cell shape changes in response to blood flow, which drive vascular remodeling and establishment of normal vascular morphology during angiogenesis . May play a critical role in the binding of endothelial cells to integrins and/or other RGD receptors . Acts as a TGF-beta coreceptor and is involved in the TGF-beta/BMP signaling cascade that ultimately leads to the activation of SMAD transcription factors .

APPLICATION

To ensure optimal assay performance, AREX recommends conducting reagent titration tailored to each testing system for optimal detection results.

IF/ICC	1:50 - 1:200
FC	1:500 - 1:2000

*Results are sample-specific. Please refer to your local assay conditions and test parameters for reference.

PRODUCT OVERVIEW

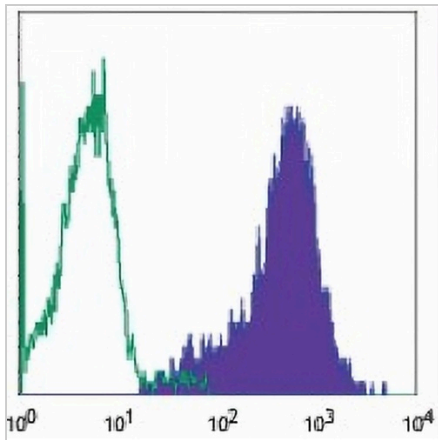
Description	Mouse monoclonal antibody to CD105
Specificity	Recognizes human CD105
Antibody Type	Primary antibody
Immunogen	Native purified human CD105.
Purification	The antibody was purified by affinity chromatography.
Form/Buffer	Mouse IgG1. Liquid in PBS, pH 7.3, and 0.02% sodium azide.
Alternative Names	END; Endoglin; CD antigen CD105
Gene Symbol	ENG
Entrez Gene	2022(Human)
SwissProt	P17813(Human)

*AREX continuously optimizes our products. Webpage content may not reflect the latest updates. For inquiries, please contact info@arexbio.com or your local distributor.

*Clone Number, Reactivity, Source/Host and Clonality can be found in the product name and Key Features section above.

DATASHEET**CD105 Mouse Monoclonal Antibody(43A3)**

CAT. NO. AMA03717

DATA

Flow cytometric analysis of MCF-7 cells using Anti-CD105 Antibody, followed by anti-mouse IgG PE.

STORAGE

Store at 4°C short term. For long term storage, store at -20°C, avoiding freeze/thaw cycles.

NOTE

For Research Use Only. Not for diagnostic, therapeutics, prophylactic or in vivo use.