

**DATASHEET**

**CD34 Mouse Monoclonal Antibody(4H11)**

CAT. NO. AMA03721

**KEY FEATURES**

Target	CD34	Source / Host	Mouse
Reactivity	Human	Clonality	Monoclonal
Applications	IF/ICC, FC	Conjugation	Unconjugated
Form / Buffer	Mouse IgG1 kappa. Liquid in PBS, pH 7.3, 0.2% BSA, and 0.02% sodium azide.	Storage	at-20°C

**BACKGROUND**

Possible adhesion molecule with a role in early hematopoiesis by mediating the attachment of stem cells to the bone marrow extracellular matrix or directly to stromal cells. Could act as a scaffold for the attachment of lineage specific glycans, allowing stem cells to bind to lectins expressed by stromal cells or other marrow components. Presents carbohydrate ligands to selectins.

**APPLICATION**

To ensure optimal assay performance, AREX recommends conducting reagent titration tailored to each testing system for optimal detection results.

IF/ICC	1:50 - 1:200
FC	1:500 - 1:2000

\*Results are sample-specific. Please refer to your local assay conditions and test parameters for reference.

**PRODUCT OVERVIEW**

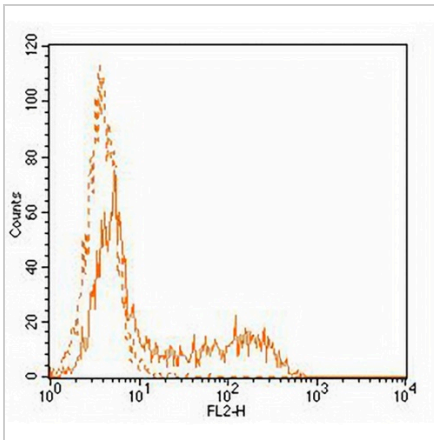
Description	Mouse monoclonal antibody to CD34
Specificity	Recognizes human CD34
Antibody Type	Primary antibody
Immunogen	Native purified human CD34.
Purification	The antibody was purified by affinity chromatography.
Form/Buffer	Mouse IgG1 kappa. Liquid in PBS, pH 7.3, 0.2% BSA, and 0.02% sodium azide.
Alternative Names	Hematopoietic progenitor cell antigen CD34; CD antigen CD34
Gene Symbol	CD34
Entrez Gene	947(Human)
SwissProt	P28906(Human)

\*AREX continuously optimizes our products. Webpage content may not reflect the latest updates. For inquiries, please contact [info@arexbio.com](mailto:info@arexbio.com) or your local distributor.

\*Clone Number, Reactivity, Source/Host and Clonality can be found in the product name and Key Features section above.

**DATASHEET****CD34 Mouse Monoclonal Antibody(4H11)**

CAT. NO. AMA03721

**DATA**

Flow cytometric analysis of HEL cells using Anti-CD34 Antibody, followed by anti-mouse IgG PE.

**STORAGE**

Store at 4°C short term. For long term storage, store at -20°C, avoiding freeze/thaw cycles.

**NOTE**

For Research Use Only. Not for diagnostic, therapeutics, prophylactic or in vivo use.