

DATASHEET

CD123 Mouse Monoclonal Antibody(6H6)

CAT. NO. AMA03732

KEY FEATURES

Target	CD123	Source / Host	Mouse
Reactivity	Human	Clonality	Monoclonal
Applications	IF/ICC, FC	Conjugation	Unconjugated
Form / Buffer	Mouse IgG1. Liquid in PBS, pH 7.3, and 0.02% sodium azide.	Storage	at-20°C

BACKGROUND

Cell surface receptor for IL3 expressed on hematopoietic progenitor cells, monocytes and B-lymphocytes that controls the production and differentiation of hematopoietic progenitor cells into lineage-restricted cells . Ligand stimulation rapidly induces hetrodimerization with IL3RB, phosphorylation and enzyme activity of effector proteins such as JAK2 and PI3K that play a role in signaling cell proliferation and differentiation. Activation of JAK2 leads to STAT5-mediated transcriptional program .

APPLICATION

To ensure optimal assay performance, AREX recommends conducting reagent titration tailored to each testing system for optimal detection results.

PRODUCT OVERVIEW

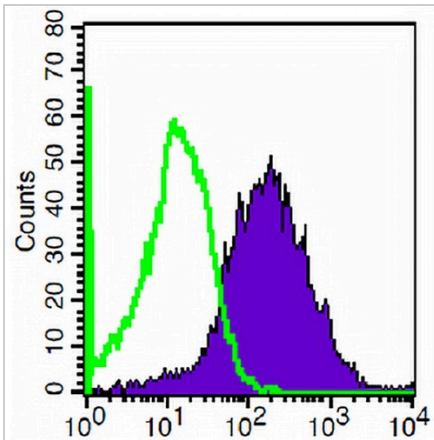
Description	Mouse monoclonal antibody to CD123
Specificity	Recognizes human CD123
Antibody Type	Primary antibody
Immunogen	Native purified human CD123.
Purification	The antibody was purified by affinity chromatography.
Form/Buffer	Mouse IgG1. Liquid in PBS, pH 7.3, and 0.02% sodium azide.
Alternative Names	IL3R; Interleukin-3 receptor subunit alpha; IL-3 receptor subunit alpha; IL-3R subunit alpha; IL-3R-alpha; IL-3RA; CD antigen CD123
Gene Symbol	IL3RA
Entrez Gene	3563(Human)
SwissProt	P26951(Human)

*AREX continuously optimizes our products. Webpage content may not reflect the latest updates. For inquiries, please contact info@arexbio.com or your local distributor.

*Clone Number, Reactivity, Source/Host and Clonality can be found in the product name and Key Features section above.

DATASHEET**CD123 Mouse Monoclonal Antibody(6H6)**

CAT. NO. AMA03732

DATA

Flow cytometric analysis of human peripheral blood cells using Anti-CD123 Antibody, followed by anti-mouse IgG PE.

STORAGE

Store at 4°C short term. For long term storage, store at -20°C, avoiding freeze/thaw cycles.

NOTE

For Research Use Only. Not for diagnostic, therapeutics, prophylactic or in vivo use.