

## DATASHEET

# CD20 Mouse Monoclonal Antibody(BCA/B20)

CAT. NO. AMA03753

### KEY FEATURES

Target	CD20	Source / Host	Mouse
Reactivity	Human	Clonality	Monoclonal
Applications	IF/ICC, FC	Conjugation	Unconjugated
Form / Buffer	Mouse IgG2a. Liquid in PBS, pH 7.3, and 0.02% sodium azide.	Storage	at-20°C

### BACKGROUND

B-lymphocyte-specific membrane protein that plays a role in the regulation of cellular calcium influx necessary for the development, differentiation, and activation of B-lymphocytes . Functions as a store-operated calcium (SOC) channel component promoting calcium influx after activation by the B-cell receptor/BCR .

### APPLICATION

To ensure optimal assay performance, AREX recommends conducting reagent titration tailored to each testing system for optimal detection results.

IF/ICC	1:50 - 1:200
FC	1:500 - 1:2000

\*Results are sample-specific. Please refer to your local assay conditions and test parameters for reference.

### PRODUCT OVERVIEW

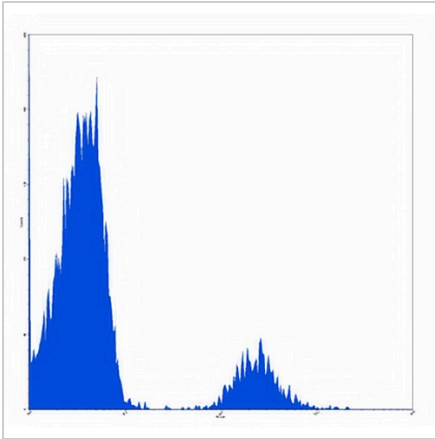
Description	Mouse monoclonal antibody to CD20
Specificity	Recognizes human CD20
Antibody Type	Primary antibody
Immunogen	Native purified human CD20.
Purification	The antibody was purified by affinity chromatography.
Form/Buffer	Mouse IgG2a. Liquid in PBS, pH 7.3, and 0.02% sodium azide.
Alternative Names	CD20; B-lymphocyte antigen CD20; B-lymphocyte surface antigen B1; Bp35; Leukocyte surface antigen Leu-16; Membrane-spanning 4-domains subfamily A member 1; CD antigen CD20
Gene Symbol	MS4A1
Entrez Gene	931(Human)
SwissProt	P11836(Human)

\*AREX continuously optimizes our products. Webpage content may not reflect the latest updates. For inquiries, please contact [info@arexbio.com](mailto:info@arexbio.com) or your local distributor.

\*Clone Number, Reactivity, Source/Host and Clonality can be found in the product name and Key Features section above.

**DATASHEET****CD20 Mouse Monoclonal Antibody(BCA/B20)**

CAT. NO. AMA03753

**DATA**

Flow cytometric analysis of human peripheral blood lymphocytes using Anti-CD20 Antibody, followed by anti-mouse IgG PE.

**STORAGE**

Store at 4°C short term. For long term storage, store at -20°C, avoiding freeze/thaw cycles.

**NOTE**

For Research Use Only. Not for diagnostic, therapeutics, prophylactic or in vivo use.