

**DATASHEET**

**CD16 Mouse Monoclonal Antibody(CB16)**

CAT. NO. AMA03762

**KEY FEATURES**

Target	CD16	Source / Host	Mouse
Reactivity	Human	Clonality	Monoclonal
Applications	WB, IF/ICC, FC	Conjugation	Unconjugated
Form / Buffer	Mouse IgG1. Liquid in PBS, pH 7.3, and 0.02% sodium azide.	Storage	at-20°C

**BACKGROUND**

Receptor for the Fc region of immunoglobulins gamma. Low affinity receptor. Binds complexed or aggregated IgG and also monomeric IgG. Contrary to III-A, is not capable to mediate antibody-dependent cytotoxicity and phagocytosis. May serve as a trap for immune complexes in the peripheral circulation which does not activate neutrophils.

**APPLICATION**

To ensure optimal assay performance, AREX recommends conducting reagent titration tailored to each testing system for optimal detection results.

WB	1:500 - 1:1000
IF/ICC	1:50 - 1:200
FC	1:500 - 1:2000

\*Results are sample-specific. Please refer to your local assay conditions and test parameters for reference.

**PRODUCT OVERVIEW**

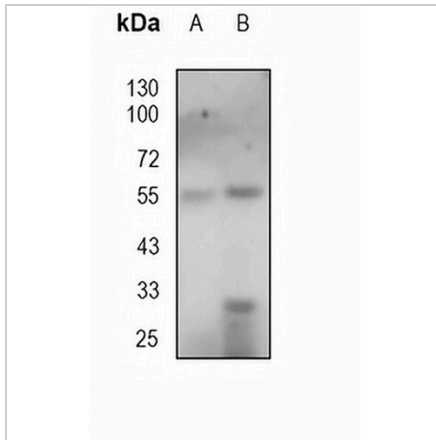
Description	Mouse monoclonal antibody to CD16
Specificity	Recognizes human CD16
Antibody Type	Primary antibody
Immunogen	Native purified human CD16.
Purification	The antibody was purified by affinity chromatography.
Molecular Weight	Predicted: 26 kD; Observed: 55 kD
Form/Buffer	Mouse IgG1. Liquid in PBS, pH 7.3, and 0.02% sodium azide.
Alternative Names	CD16B; FCG3; FCGR3; IGFR3; Low affinity immunoglobulin gamma Fc region receptor III-B; Fc-gamma RIII-beta; Fc-gamma RIII; Fc-gamma RIIIb; FcRIII; FcRIIIb; FcR-10; IgG Fc receptor III-1; CD antigen CD16b
Gene Symbol	FCGR3B
Entrez Gene	2215(Human)
SwissProt	O75015(Human)

\*AREX continuously optimizes our products. Webpage content may not reflect the latest updates. For inquiries, please contact [info@arexbio.com](mailto:info@arexbio.com) or your local distributor.

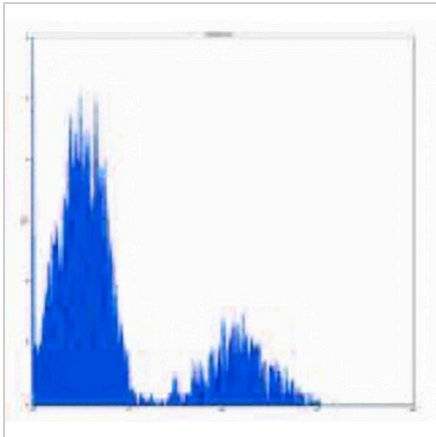
\*Clone Number, Reactivity, Source/Host and Clonality can be found in the product name and Key Features section above.

**DATASHEET****CD16 Mouse Monoclonal Antibody(CB16)**

CAT. NO. AMA03762

**DATA**

Western blot analysis of CD16 expression in mouse liver (A), mouse spleen (B) whole cell lysates. (Predicted band size: 26 kD; Observed band size: 55 kD)



Flow cytometric analysis of human peripheral blood lymphocytes using Anti-CD16 Antibody, followed by anti-mouse IgG PE.

**STORAGE**

Store at 4°C short term. For long term storage, store at -20°C, avoiding freeze/thaw cycles.

**NOTE**

For Research Use Only. Not for diagnostic, therapeutics, prophylactic or in vivo use.