

## DATASHEET

# CD19 Mouse Monoclonal Antibody(CB19)

CAT. NO. AMA03763

### KEY FEATURES

Target	CD19	Source / Host	Mouse
Reactivity	Human	Clonality	Monoclonal
Applications	WB, IF/ICC, FC	Conjugation	Unconjugated
Form / Buffer	Mouse IgG1. Liquid in PBS, pH 7.3, and 0.02% sodium azide.	Storage	at-20°C

### BACKGROUND

Functions as a coreceptor for the B-cell antigen receptor complex (BCR) on B-lymphocytes on B-lymphocytes . Decreases the threshold for activation of downstream signaling pathways and for triggering B-cell responses to antigens . Activates signaling pathways that lead to the activation of phosphatidylinositol 3-kinase and the mobilization of intracellular Ca(2+) stores . Is not required for early steps during B cell differentiation in the blood marrow . Required for normal differentiation of B-1 cells . Required for normal B cell differentiation and proliferation in response to antigen challenges . Required for normal levels of serum immunoglobulins, and for production of high-affinity antibodies in response to antigen challenge .

### APPLICATION

To ensure optimal assay performance, AREX recommends conducting reagent titration tailored to each testing system for optimal detection results.

WB	1:500 - 1:1000
IF/ICC	1:50 - 1:200
FC	1:500 - 1:2000

\*Results are sample-specific. Please refer to your local assay conditions and test parameters for reference.

### PRODUCT OVERVIEW

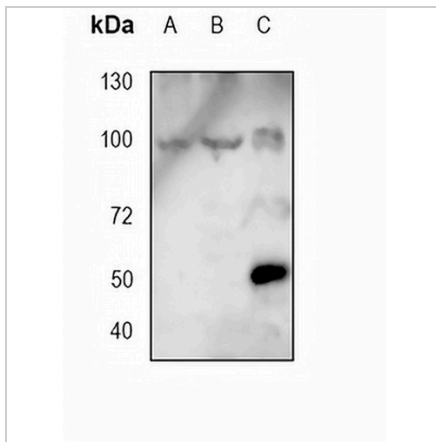
Description	Mouse monoclonal antibody to CD19
Specificity	Recognizes human CD19
Antibody Type	Primary antibody
Immunogen	Native purified human CD19.
Purification	The antibody was purified by affinity chromatography.
Molecular Weight	Predicted: 61 kD; Observed: 95 kD
Form/Buffer	Mouse IgG1. Liquid in PBS, pH 7.3, and 0.02% sodium azide.
Alternative Names	B-lymphocyte antigen CD19; B-lymphocyte surface antigen B4; Differentiation antigen CD19; T-cell surface antigen Leu-12; CD antigen CD19
Gene Symbol	CD19
Entrez Gene	930(Human)
SwissProt	P15391(Human)

\*AREX continuously optimizes our products. Webpage content may not reflect the latest updates. For inquiries, please contact [info@arexbio.com](mailto:info@arexbio.com) or your local distributor.

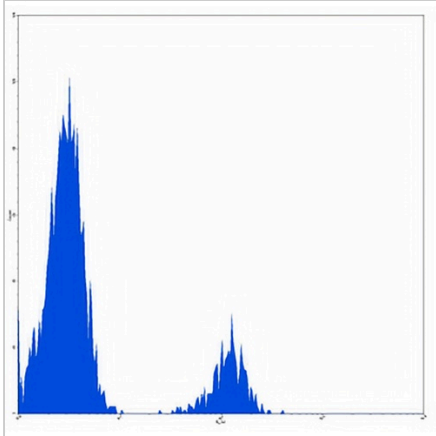
\*Clone Number, Reactivity, Source/Host and Clonality can be found in the product name and Key Features section above.

**DATASHEET****CD19 Mouse Monoclonal Antibody(CB19)**

CAT. NO. AMA03763

**DATA**

Western blot analysis of CD19 expression in U87 (A), A375 (B), mouse muscle (C) whole cell lysates. (Predicted band size: 61 kD; Observed band size: 95 kD)



Flow cytometric analysis of human peripheral blood lymphocytes using Anti-CD19 Antibody, followed by anti-mouse IgG PE.

**STORAGE**

Store at 4°C short term. For long term storage, store at -20°C, avoiding freeze/thaw cycles.

**NOTE**

For Research Use Only. Not for diagnostic, therapeutics, prophylactic or in vivo use.