

**DATASHEET**

**CD10 Mouse Monoclonal Antibody(CB-CALLA)**

CAT. NO. AMA03765

**KEY FEATURES**

Target	CD10	Source / Host	Mouse
Reactivity	Human	Clonality	Monoclonal
Applications	WB, IF/ICC, FC	Conjugation	Unconjugated
Form / Buffer	Mouse IgG1. Liquid in PBS, pH 7.3, and 0.02% sodium azide.	Storage	at-20°C

**BACKGROUND**

Thermolysin-like specificity, but is almost confined on acting on polypeptides of up to 30 amino acids . Biologically important in the destruction of opioid peptides such as Met- and Leu-enkephalins by cleavage of a Gly-Phe bond . Catalyzes cleavage of bradykinin, substance P and neurotensin peptides . Able to cleave angiotensin-1, angiotensin-2 and angiotensin 1-9 . Involved in the degradation of atrial natriuretic factor (ANF) and brain natriuretic factor (BNP(1-32)) . Displays UV-inducible elastase activity toward skin preelastic and elastic fibers .

**APPLICATION**

To ensure optimal assay performance, AREX recommends conducting reagent titration tailored to each testing system for optimal detection results.

WB	1:500 - 1:1000
IF/ICC	1:50 - 1:200
FC	1:500 - 1:2000

\*Results are sample-specific. Please refer to your local assay conditions and test parameters for reference.

**PRODUCT OVERVIEW**

Description	Mouse monoclonal antibody to CD10
Specificity	Recognizes human CD10
Antibody Type	Primary antibody
Immunogen	Native purified human CD10.
Purification	The antibody was purified by affinity chromatography.
Molecular Weight	Predicted: 85 kD; Observed: 100 kD
Form/Buffer	Mouse IgG1. Liquid in PBS, pH 7.3, and 0.02% sodium azide.
Alternative Names	EPN; Neprilysin; Atriopeptidase; Common acute lymphocytic leukemia antigen; CALLA; Enkephalinase; Neutral endopeptidase 24.11; NEP; Neutral endopeptidase; Skin fibroblast elastase; SFE; CD antigen CD10
Gene Symbol	MME
Entrez Gene	4311(Human)
SwissProt	P08473(Human)

\*AREX continuously optimizes our products. Webpage content may not reflect the latest updates. For inquiries, please contact [info@arexbio.com](mailto:info@arexbio.com) or your local distributor.

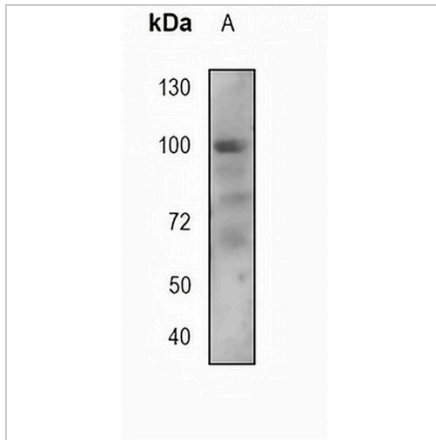
\*Clone Number, Reactivity, Source/Host and Clonality can be found in the product name and Key Features section above.

**DATASHEET**

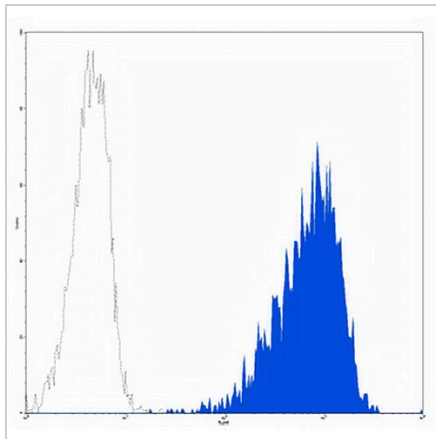
**CD10 Mouse Monoclonal Antibody(CB-CALLA)**

CAT. NO. AMA03765

**DATA**



Western blot analysis of CD10 expression in mouse muscle (A) whole cell lysates.  
(Predicted band size: 85 kD; Observed band size: 100 kD)



Flow cytometric analysis of REH cells using Anti-CD10 Antibody, followed by anti-mouse IgG PE.

**STORAGE**

Store at 4°C short term. For long term storage, store at -20°C, avoiding freeze/thaw cycles.

**NOTE**

For Research Use Only. Not for diagnostic, therapeutics, prophylactic or in vivo use.