

DATASHEET

CD147 Mouse Monoclonal Antibody(HIM6)

CAT. NO. AMA03798

KEY FEATURES

Target	CD147	Source / Host	Mouse
Reactivity	Human	Clonality	Monoclonal
Applications	IF/ICC, FC	Conjugation	Unconjugated
Form / Buffer	Mouse IgG1. Liquid in PBS, pH 7.3, and 0.02% sodium azide.	Storage	at-20°C

BACKGROUND

Essential for normal retinal maturation and development . Acts as a retinal cell surface receptor for NXNL1 and plays an important role in NXNL1-mediated survival of retinal cone photoreceptors . In association with glucose transporter SLC16A1/GLUT1 and NXNL1, promotes retinal cone survival by enhancing aerobic glycolysis and accelerating the entry of glucose into photoreceptors . May act as a potent stimulator of IL6 secretion in multiple cell lines that include monocytes .

APPLICATION

To ensure optimal assay performance, AREX recommends conducting reagent titration tailored to each testing system for optimal detection results.

IF/ICC	1:50 - 1:200
FC	1:500 - 1:2000

*Results are sample-specific. Please refer to your local assay conditions and test parameters for reference.

PRODUCT OVERVIEW

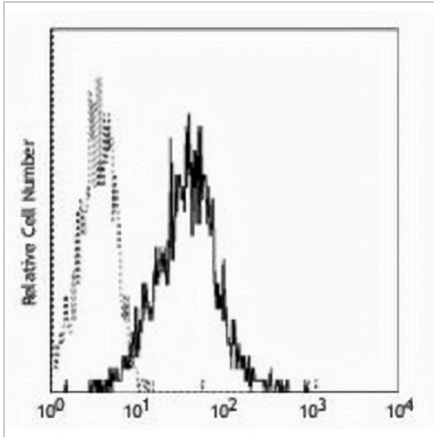
Description	Mouse monoclonal antibody to CD147
Specificity	Recognizes human CD147
Antibody Type	Primary antibody
Immunogen	Native purified human CD147.
Purification	The antibody was purified by affinity chromatography.
Form/Buffer	Mouse IgG1. Liquid in PBS, pH 7.3, and 0.02% sodium azide.
Alternative Names	Basigin; 5F7; Collagenase stimulatory factor; Extracellular matrix metalloproteinase inducer; EMMPRIN; Leukocyte activation antigen M6; OK blood group antigen; Tumor cell-derived collagenase stimulatory factor; TCSF; CD antigen CD147
Gene Symbol	BSG
Entrez Gene	682(Human)
SwissProt	P35613(Human)

*AREX continuously optimizes our products. Webpage content may not reflect the latest updates. For inquiries, please contact info@arexbio.com or your local distributor.

*Clone Number, Reactivity, Source/Host and Clonality can be found in the product name and Key Features section above.

DATASHEET**CD147 Mouse Monoclonal Antibody(HIM6)**

CAT. NO. AMA03798

DATA

Flow cytometric analysis of human peripheral blood lymphocytes using Anti-CD147 Antibody, followed by anti-mouse IgG PE.

STORAGE

Store at 4°C short term. For long term storage, store at -20°C, avoiding freeze/thaw cycles.

NOTE

For Research Use Only. Not for diagnostic, therapeutics, prophylactic or in vivo use.