

## DATASHEET

# CD38 Mouse Monoclonal Antibody(HIT2)

CAT. NO. AMA03802

### KEY FEATURES

Target	CD38	Source / Host	Mouse
Reactivity	Human	Clonality	Monoclonal
Applications	IF/ICC, FC	Conjugation	Unconjugated
Form / Buffer	Mouse IgG1. Liquid in PBS, pH 7.3, and 0.02% sodium azide.	Storage	at-20°C

### BACKGROUND

Multifunctional transmembrane glycoprotein able to exert enzymatic activities and also to mobilize calcium, to transduce signals, to adhere to hyaluronan and to other ligands. Synthesizes cyclic ADP-ribose (cADPR), a second messenger for glucose-induced insulin secretion, a second messenger for glucose-induced insulin secretion. Synthesizes the Ca(2+) mobilizer nicotinate-adenine dinucleotide phosphate, NAADP(+), from 2'-phospho-cADPR and nicotinic acid, as well as from NADP(+) and nicotinic acid. At both pH 5.0 and pH 7.4 preferentially transforms 2'-phospho-cADPR into NAADP(+), while preferentially cleaving NADP(+) to cADPR and ADPRP rather than into NADDP(+). Has cADPR hydrolase activity.

### APPLICATION

To ensure optimal assay performance, AREX recommends conducting reagent titration tailored to each testing system for optimal detection results.

IF/ICC	1:50 - 1:200
FC	1:500 - 1:2000

\*Results are sample-specific. Please refer to your local assay conditions and test parameters for reference.

### PRODUCT OVERVIEW

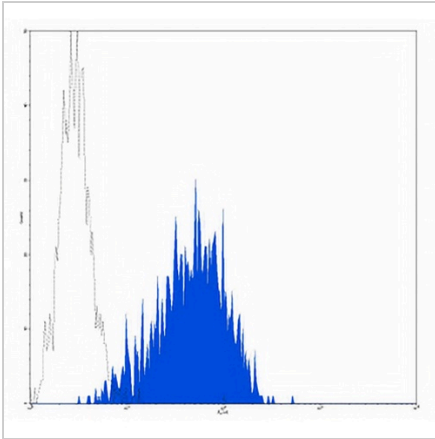
Description	Mouse monoclonal antibody to CD38
Specificity	Recognizes human CD38
Antibody Type	Primary antibody
Immunogen	Native purified human CD38.
Purification	The antibody was purified by affinity chromatography.
Form/Buffer	Mouse IgG1. Liquid in PBS, pH 7.3, and 0.02% sodium azide.
Alternative Names	ADP-ribosyl cyclase/cyclic ADP-ribose hydrolase 1; 2'-phospho-ADP-ribosyl cyclase; 2'-phospho-ADP-ribosyl cyclase/2'-phospho-cyclic-ADP-ribose transferase; 2'-phospho-cyclic-ADP-ribose transferase; ADP-ribosyl cyclase 1; ADPRC 1; Cyclic ADP-ribose hydrolase 1; cADPr hydrolase 1; T10; CD antigen CD38
Gene Symbol	CD38
Entrez Gene	952(Human)
SwissProt	P28907(Human)

\*AREX continuously optimizes our products. Webpage content may not reflect the latest updates. For inquiries, please contact [info@arexbio.com](mailto:info@arexbio.com) or your local distributor.

\*Clone Number, Reactivity, Source/Host and Clonality can be found in the product name and Key Features section above.

**DATASHEET****CD38 Mouse Monoclonal Antibody(HIT2)**

CAT. NO. AMA03802

**DATA**

Flow cytometric analysis of human lymphocytes treated with PHA and ConA using Anti-CD38 Antibody, followed by anti-mouse IgG PE.

**STORAGE**

Store at 4°C short term. For long term storage, store at -20°C, avoiding freeze/thaw cycles.

**NOTE**

For Research Use Only. Not for diagnostic, therapeutics, prophylactic or in vivo use.