

DATASHEET

CD25 Mouse Monoclonal Antibody(JM7B6)

CAT. NO. AMA03813

KEY FEATURES

Target	CD25	Source / Host	Mouse
Reactivity	Human	Clonality	Monoclonal
Applications	WB, IF/ICC, FC	Conjugation	Unconjugated
Form / Buffer	Mouse IgG2a. Liquid in PBS, pH 7.3, and 0.02% sodium azide.	Storage	at-20°C

BACKGROUND

Receptor for interleukin-2. The receptor is involved in the regulation of immune tolerance by controlling regulatory T cells (TREGs) activity. TREGs suppress the activation and expansion of autoreactive T-cells.

APPLICATION

To ensure optimal assay performance, AREX recommends conducting reagent titration tailored to each testing system for optimal detection results.

WB	1:500 - 1:1000
IF/ICC	1:50 - 1:200
FC	1:500 - 1:2000

*Results are sample-specific. Please refer to your local assay conditions and test parameters for reference.

PRODUCT OVERVIEW

Description	Mouse monoclonal antibody to CD25
Specificity	Recognizes human CD25
Antibody Type	Primary antibody
Immunogen	Native purified human CD25.
Purification	The antibody was purified by affinity chromatography.
Molecular Weight	Predicted: 30 kD; Observed: 35-55 kD
Form/Buffer	Mouse IgG2a. Liquid in PBS, pH 7.3, and 0.02% sodium azide.
Alternative Names	Interleukin-2 receptor subunit alpha; IL-2 receptor subunit alpha; IL-2-RA; IL-2R subunit alpha; IL2-RA; TAC antigen; p55; CD antigen CD25
Gene Symbol	IL2RA
Entrez Gene	3559(Human)
SwissProt	P01589(Human)

*AREX continuously optimizes our products. Webpage content may not reflect the latest updates. For inquiries, please contact info@arexbio.com or your local distributor.

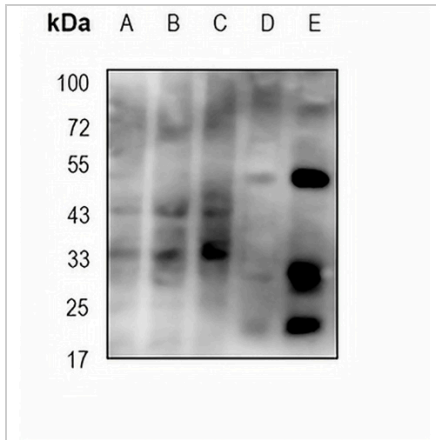
*Clone Number, Reactivity, Source/Host and Clonality can be found in the product name and Key Features section above.

DATASHEET

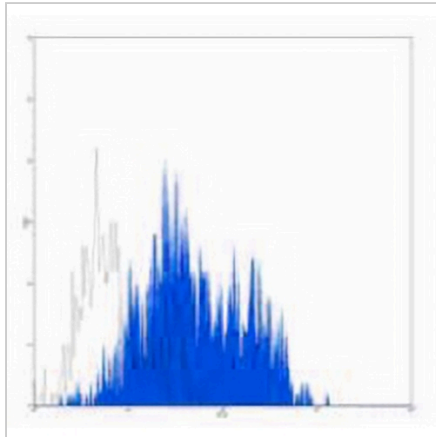
CD25 Mouse Monoclonal Antibody(JM7B6)

CAT. NO. AMA03813

DATA



Western blot analysis of CD25 expression in A549 (A), MCF7 (B), U87 (C), mouse brain (D), mouse spleen (E) whole cell lysates. (Predicted band size: 30 kD; Observed band size: 35-55 kD)



Flow cytometric analysis of human lymphocytes treated with PHA using Anti-CD25 Antibody, followed by anti-mouse IgG PE.

STORAGE

Store at 4°C short term. For long term storage, store at -20°C, avoiding freeze/thaw cycles.

NOTE

For Research Use Only. Not for diagnostic, therapeutics, prophylactic or in vivo use.