

DATASHEET

HLA-DR Mouse Monoclonal Antibody(L243)

CAT. NO. AMA03815

KEY FEATURES

Target	HLA-DR	Source / Host	Mouse
Reactivity	Human	Clonality	Monoclonal
Applications	IF/ICC, FC	Conjugation	Unconjugated
Form / Buffer	Mouse IgG2a kappa. Liquid in PBS, pH 7.3, and 0.02% sodium azide.	Storage	at-20°C

BACKGROUND

An alpha chain of antigen-presenting major histocompatibility complex class II (MHCII) molecule. In complex with the beta chain HLA-DRB, displays antigenic peptides on professional antigen presenting cells (APCs) for recognition by alpha-beta T cell receptor (TCR) on HLA-DR-restricted CD4-positive T cells. This guides antigen-specific T-helper effector functions, both antibody-mediated immune response and macrophage activation, to ultimately eliminate the infectious agents and transformed cells molecule. In complex with the beta chain HLA-DRB, displays antigenic peptides on professional antigen presenting cells (APCs) for recognition by alpha-beta T cell receptor (TCR) on HLA-DR-restricted CD4-positive T cells.

APPLICATION

To ensure optimal assay performance, AREX recommends conducting reagent titration tailored to each testing system for optimal detection results.

IF/ICC	1:50 - 1:200
FC	1:500 - 1:2000

*Results are sample-specific. Please refer to your local assay conditions and test parameters for reference.

PRODUCT OVERVIEW

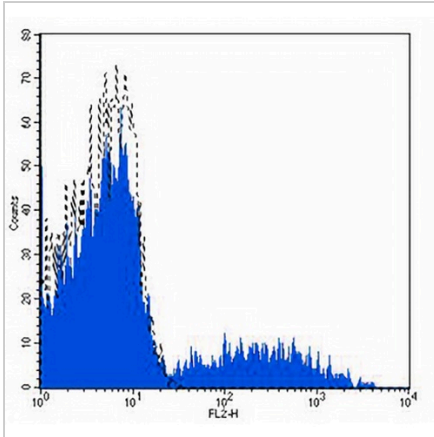
Description	Mouse monoclonal antibody to HLA-DR
Specificity	Recognizes human HLA-DR
Antibody Type	Primary antibody
Immunogen	Native purified human HLA-DR.
Purification	The antibody was purified by affinity chromatography.
Form/Buffer	Mouse IgG2a kappa. Liquid in PBS, pH 7.3, and 0.02% sodium azide.
Alternative Names	HLA-DRA1; HLA class II histocompatibility antigen. DR alpha chain; MHC class II antigen DRA
Gene Symbol	HLA-DRA
Entrez Gene	3122(Human)
SwissProt	P01903(Human)

*AREX continuously optimizes our products. Webpage content may not reflect the latest updates. For inquiries, please contact info@arexbio.com or your local distributor.

*Clone Number, Reactivity, Source/Host and Clonality can be found in the product name and Key Features section above.

DATASHEET**HLA-DR Mouse Monoclonal Antibody(L243)**

CAT. NO. AMA03815

DATA

Flow cytometric analysis of human peripheral blood lymphocytes using Anti-HLA-DR Antibody, followed by anti-mouse IgG PE.

STORAGE

Store at 4°C short term. For long term storage, store at -20°C, avoiding freeze/thaw cycles.

NOTE

For Research Use Only. Not for diagnostic, therapeutics, prophylactic or in vivo use.