

**DATASHEET**

**CD11b Rat Monoclonal Antibody(M1/70)**

CAT. NO. AMA03818

**KEY FEATURES**

Target	CD11b	Source / Host	Rat
Reactivity	Human	Clonality	Monoclonal
Applications	IF/ICC, FC	Conjugation	Unconjugated
Form / Buffer	Rat IgG2b kappa. Liquid in PBS, pH 7.3, and 0.02% sodium azide.	Storage	at-20°C

**BACKGROUND**

Integrin ITGAM/ITGB2 is implicated in various adhesive interactions of monocytes, macrophages and granulocytes as well as in mediating the uptake of complement-coated particles and pathogens . It is identical with CR-3, the receptor for the iC3b fragment of the third complement component. It probably recognizes the R-G-D peptide in C3b. Integrin ITGAM/ITGB2 is also a receptor for fibrinogen and factor X. It recognizes P1 and P2 peptides of fibrinogen gamma chain. Regulates neutrophil migration . In association with beta subunit ITGB2/CD18, required for CD177-PRTN3-mediated activation of TNF primed neutrophils . Integrin ITGAM/ITGB2 is also a receptor for ICAM1 ligand ensuring adhesion between stimulated neutrophils and stimulated endothelial cells .

**APPLICATION**

To ensure optimal assay performance, AREX recommends conducting reagent titration tailored to each testing system for optimal detection results.

IF/ICC	1:50 - 1:200
FC	1:500 - 1:2000

\*Results are sample-specific. Please refer to your local assay conditions and test parameters for reference.

**PRODUCT OVERVIEW**

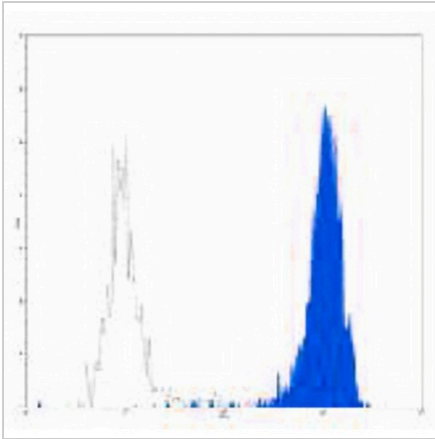
Description	Rat monoclonal antibody to CD11b
Specificity	Recognizes human CD11b
Antibody Type	Primary antibody
Immunogen	Native purified human CD11b.
Purification	The antibody was purified by affinity chromatography.
Form/Buffer	Rat IgG2b kappa. Liquid in PBS, pH 7.3, and 0.02% sodium azide.
Alternative Names	CD11B; CR3A; Integrin alpha-M; CD11 antigen-like family member B; CR-3 alpha chain; Cell surface glycoprotein MAC-1 subunit alpha; Leukocyte adhesion receptor MO1; Neutrophil adherence receptor; CD antigen CD11b
Gene Symbol	ITGAM
Entrez Gene	3684(Human)
SwissProt	P11215(Human)

\*AREX continuously optimizes our products. Webpage content may not reflect the latest updates. For inquiries, please contact [info@arexbio.com](mailto:info@arexbio.com) or your local distributor.

\*Clone Number, Reactivity, Source/Host and Clonality can be found in the product name and Key Features section above.

**DATASHEET****CD11b Rat Monoclonal Antibody(M1/70)**

CAT. NO. AMA03818

**DATA**

Flow cytometric analysis of human peripheral blood granulocytes using Anti-CD11b Antibody, followed by anti-mouse IgG PE.

**STORAGE**

Store at 4°C short term. For long term storage, store at -20°C, avoiding freeze/thaw cycles.

**NOTE**

For Research Use Only. Not for diagnostic, therapeutics, prophylactic or in vivo use.