

## DATASHEET

# CD3 Mouse Monoclonal Antibody(OKT3)

CAT. NO. AMA03836

### KEY FEATURES

Target	CD3	Source / Host	Mouse
Reactivity	Human	Clonality	Monoclonal
Applications	IF/ICC, FC	Conjugation	Unconjugated
Form / Buffer	Mouse IgG2a. Liquid in PBS, pH 7.3, 0.2% BSA, and 0.02% sodium azide.	Storage	at-20°C

### BACKGROUND

Part of the TCR-CD3 complex present on T-lymphocyte cell surface that plays an essential role in adaptive immune response. When antigen presenting cells (APCs) activate T-cell receptor (TCR), TCR-mediated signals are transmitted across the cell membrane by the CD3 chains CD3D, CD3E, CD3G and CD247/CD3Z. All CD3 chains contain immunoreceptor tyrosine-based activation motifs (ITAMs) in their cytoplasmic domain. Upon TCR engagement, these motifs become phosphorylated by Src family protein tyrosine kinases LCK and FYN, resulting in the activation of downstream signaling pathways activate T-cell receptor (TCR), TCR-mediated signals are transmitted across the cell membrane by the CD3 chains CD3D, CD3E, CD3G and CD247/CD3Z.

### APPLICATION

To ensure optimal assay performance, AREX recommends conducting reagent titration tailored to each testing system for optimal detection results.

IF/ICC	1:50 - 1:200
FC	1:500 - 1:2000

\*Results are sample-specific. Please refer to your local assay conditions and test parameters for reference.

### PRODUCT OVERVIEW

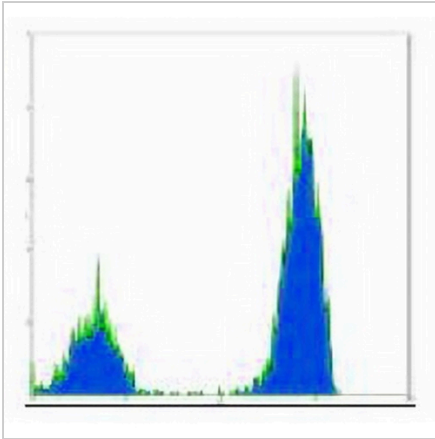
Description	Mouse monoclonal antibody to CD3
Specificity	Recognizes human CD3
Antibody Type	Primary antibody
Immunogen	Native purified human CD3.
Purification	The antibody was purified by affinity chromatography.
Form/Buffer	Mouse IgG2a. Liquid in PBS, pH 7.3, 0.2% BSA, and 0.02% sodium azide.
Alternative Names	T3D; T-cell surface glycoprotein CD3 delta chain; T-cell receptor T3 delta chain; CD antigen CD3d; T3E; T-cell surface glycoprotein CD3 epsilon chain; T-cell surface antigen T3/Leu-4 epsilon chain; CD antigen CD3e; T3G; T-cell surface glycoprotein CD3 gamma chain; T-cell receptor T3 gamma chain; CD antigen CD3g; CD3Z; T3Z; TCRZ; T-cell surface glycoprotein CD3 zeta chain; T-cell receptor T3 zeta chain; CD antigen CD247
Gene Symbol	CD3D; CD3E; CD3G; CD247
Entrez Gene	915; 916; 917; 919(Human)
SwissProt	P04234; P07766; P09693; P20963(Human)

\*AREX continuously optimizes our products. Webpage content may not reflect the latest updates. For inquiries, please contact [info@arexbio.com](mailto:info@arexbio.com) or your local distributor.

\*Clone Number, Reactivity, Source/Host and Clonality can be found in the product name and Key Features section above.

**DATASHEET****CD3 Mouse Monoclonal Antibody(OKT3)**

CAT. NO. AMA03836

**DATA**

Flow cytometric analysis of human peripheral blood lymphocytes using Anti-CD3 Antibody, followed by anti-mouse IgG PE.

**STORAGE**

Store at 4°C short term. For long term storage, store at -20°C, avoiding freeze/thaw cycles.

**NOTE**

For Research Use Only. Not for diagnostic, therapeutics, prophylactic or in vivo use.