

## DATASHEET

# CD4 Mouse Monoclonal Antibody(Riv7)

CAT. NO. AMA03850

### KEY FEATURES

Target	CD4	Source / Host	Mouse
Reactivity	Human	Clonality	Monoclonal
Applications	IF/ICC, FC	Conjugation	Unconjugated
Form / Buffer	Mouse IgG2a kappa. Liquid in PBS, pH 7.3, 0.2% BSA, and 0.02% sodium azide.	Storage	at-20°C

### BACKGROUND

Integral membrane glycoprotein that plays an essential role in the immune response and serves multiple functions in responses against both external and internal offenses. In T-cells, functions primarily as a coreceptor for MHC class II molecule:peptide complex. The antigens presented by class II peptides are derived from extracellular proteins while class I peptides are derived from cytosolic proteins. Interacts simultaneously with the T-cell receptor (TCR) and the MHC class II presented by antigen presenting cells (APCs). In turn, recruits the Src kinase LCK to the vicinity of the TCR-CD3 complex.

### APPLICATION

To ensure optimal assay performance, AREX recommends conducting reagent titration tailored to each testing system for optimal detection results.

IF/ICC	1:50 - 1:200
FC	1:500 - 1:2000

\*Results are sample-specific. Please refer to your local assay conditions and test parameters for reference.

### PRODUCT OVERVIEW

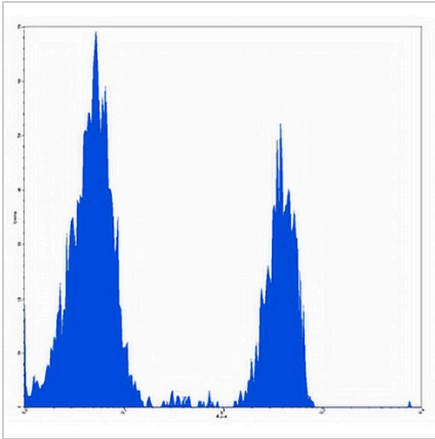
Description	Mouse monoclonal antibody to CD4
Specificity	Recognizes human CD4
Antibody Type	Primary antibody
Immunogen	Native purified human CD4.
Purification	The antibody was purified by affinity chromatography.
Form/Buffer	Mouse IgG2a kappa. Liquid in PBS, pH 7.3, 0.2% BSA, and 0.02% sodium azide.
Alternative Names	T-cell surface glycoprotein CD4; T-cell surface antigen T4/Leu-3; CD antigen CD4
Gene Symbol	CD4
Entrez Gene	920(Human)
SwissProt	P01730(Human)

\*AREX continuously optimizes our products. Webpage content may not reflect the latest updates. For inquiries, please contact [info@arexbio.com](mailto:info@arexbio.com) or your local distributor.

\*Clone Number, Reactivity, Source/Host and Clonality can be found in the product name and Key Features section above.

**DATASHEET****CD4 Mouse Monoclonal Antibody(Riv7)**

CAT. NO. AMA03850

**DATA**

Flow cytometric analysis of human peripheral blood lymphocytes using Anti-CD4 Antibody, followed by anti-mouse IgG PE.

**STORAGE**

Store at 4°C short term. For long term storage, store at -20°C, avoiding freeze/thaw cycles.

**NOTE**

For Research Use Only. Not for diagnostic, therapeutics, prophylactic or in vivo use.