

## DATASHEET

# CD282 Mouse Monoclonal Antibody(T2.5)

CAT. NO. AMA03855

### KEY FEATURES

Target	CD282	Source / Host	Mouse
Reactivity	Human	Clonality	Monoclonal
Applications	IF/ICC, FC	Conjugation	Unconjugated
Form / Buffer	Mouse IgG2b. Liquid in PBS, pH 7.3, and 0.02% sodium azide.	Storage	at-20°C

### BACKGROUND

Cooperates with LY96 to mediate the innate immune response to bacterial lipoproteins and other microbial cell wall components. Cooperates with TLR1 or TLR6 to mediate the innate immune response to bacterial lipoproteins or lipopeptides . Acts via MYD88 and TRAF6, leading to NF-kappa-B activation, cytokine secretion and the inflammatory response. May also activate immune cells and promote apoptosis in response to the lipid moiety of lipoproteins . Recognizes mycoplasmal macrophage-activating lipopeptide-2kD (MALP-2), soluble tuberculosis factor (STF), phenol-soluble modulins (PSM) and B.burgdorferi outer surface protein A lipoprotein (OspA-L) cooperatively with TLR6 .

### APPLICATION

To ensure optimal assay performance, AREX recommends conducting reagent titration tailored to each testing system for optimal detection results.

IF/ICC	1:50 - 1:200
FC	1:500 - 1:2000

\*Results are sample-specific. Please refer to your local assay conditions and test parameters for reference.

### PRODUCT OVERVIEW

Description	Mouse monoclonal antibody to CD282
Specificity	Recognizes human CD282
Antibody Type	Primary antibody
Immunogen	Native purified human CD282.
Purification	The antibody was purified by affinity chromatography.
Form/Buffer	Mouse IgG2b. Liquid in PBS, pH 7.3, and 0.02% sodium azide.
Alternative Names	TIL4; Toll-like receptor 2; Toll/interleukin-1 receptor-like protein 4; CD antigen CD282
Gene Symbol	TLR2
Entrez Gene	7097(Human)
SwissProt	O60603(Human)

\*AREX continuously optimizes our products. Webpage content may not reflect the latest updates. For inquiries, please contact [info@arexbio.com](mailto:info@arexbio.com) or your local distributor.

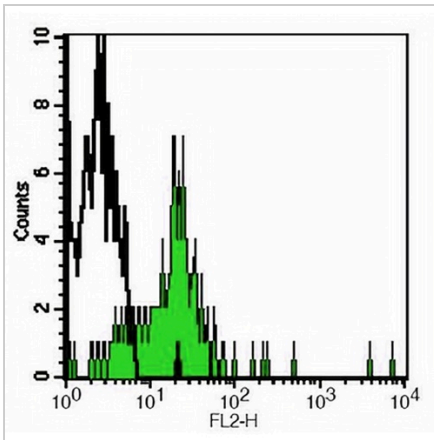
\*Clone Number, Reactivity, Source/Host and Clonality can be found in the product name and Key Features section above.

**DATASHEET**

**CD282 Mouse Monoclonal Antibody(T2.5)**

CAT. NO. AMA03855

**DATA**



Flow cytometric analysis of human peripheral blood monocytes using Anti-CD282 Antibody, followed by anti-mouse IgG PE.

**STORAGE**

Store at 4°C short term. For long term storage, store at -20°C, avoiding freeze/thaw cycles.

**NOTE**

For Research Use Only. Not for diagnostic, therapeutics, prophylactic or in vivo use.