

DATASHEET

CD18 Mouse Monoclonal Antibody(TS1/18.1.2)

CAT. NO. AMA03864

KEY FEATURES

Target	CD18	Source / Host	Mouse
Reactivity	Human	Clonality	Monoclonal
Applications	IF/ICC, FC	Conjugation	Unconjugated
Form / Buffer	Mouse IgG1. Liquid in PBS, pH 7.3, and 0.02% sodium azide.	Storage	at-20°C

BACKGROUND

Integrin ITGAL:ITGB2 is a receptor for ICAM1, ICAM2 and ICAM3 . Integrin ITGAL:ITGB2 is also a receptor for the secreted form of ubiquitin-like protein ISG15; the interaction is mediated by ITGAL . Integrins ITGAM:ITGB2 and ITGAX:ITGB2 are receptors for the iC3b fragment of the third complement component and for fibrinogen. Integrin ITGAX:ITGB2 recognizes the sequence G-P-R in fibrinogen alpha-chain. Integrin ITGAM:ITGB2 recognizes P1 and P2 peptides of fibrinogen gamma chain. Integrin ITGAM:ITGB2 is also a receptor for factor X. Integrin ITGAD:ITGB2 is a receptor for ICAM3 and VCAM1 . Contributes to natural killer cell cytotoxicity . Involved in leukocyte adhesion and transmigration of leukocytes including T-cells and neutrophils .

APPLICATION

To ensure optimal assay performance, AREX recommends conducting reagent titration tailored to each testing system for optimal detection results.

IF/ICC	1:50 - 1:200
FC	1:500 - 1:2000

*Results are sample-specific. Please refer to your local assay conditions and test parameters for reference.

PRODUCT OVERVIEW

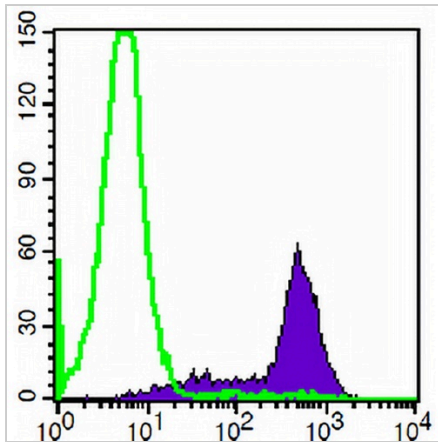
Description	Mouse monoclonal antibody to CD18
Specificity	Recognizes human CD18
Antibody Type	Primary antibody
Immunogen	Native purified human CD18.
Purification	The antibody was purified by affinity chromatography.
Form/Buffer	Mouse IgG1. Liquid in PBS, pH 7.3, and 0.02% sodium azide.
Alternative Names	CD18; MFI7; Integrin beta-2; Cell surface adhesion glycoproteins LFA-1/CR3/p150.95 subunit beta; Complement receptor C3 subunit beta; CD antigen CD18
Gene Symbol	ITGB2
Entrez Gene	3689(Human)
SwissProt	P05107(Human)

*AREX continuously optimizes our products. Webpage content may not reflect the latest updates. For inquiries, please contact info@arexbio.com or your local distributor.

*Clone Number, Reactivity, Source/Host and Clonality can be found in the product name and Key Features section above.

DATASHEET**CD18 Mouse Monoclonal Antibody(TS1/18.1.2)**

CAT. NO. AMA03864

DATA

Flow cytometric analysis of human peripheral blood lymphocytes using Anti-CD18 Antibody, followed by anti-mouse IgG PE.

STORAGE

Store at 4°C short term. For long term storage, store at -20°C, avoiding freeze/thaw cycles.

NOTE

For Research Use Only. Not for diagnostic, therapeutics, prophylactic or in vivo use.