

**DATASHEET**

**Alpha-1B Adrenergic Receptor Rabbit Polyclonal Antibody**

CAT. NO. APA06631

**KEY FEATURES**

Target	Alpha-1B Adrenergic Receptor	Source / Host	Rabbit
Reactivity	Human, Rat	Clonality	Polyclonal
Applications	WB	Conjugation	Unconjugated
Form / Buffer	Liquid in 0.42% Potassium phosphate, 0.87% Sodium chloride, pH 7.3, 30% glycerol, and 0.01% sodium azide.		Storage at -20°C

**BACKGROUND**

Alpha-1 adrenergic receptors are G protein-coupled receptors for catecholamines that signal through the G(q) family of G proteins, including G(q) and G(11). Upon activation, they stimulate the phosphatidylinositol-calcium second messenger pathway, leading to calcium release from intracellular stores and activation of protein kinase C. ADRA1B binds the catecholamine ligands norepinephrine and epinephrine family of G proteins, including G(q) and G(11). Upon activation, they stimulate the phosphatidylinositol-calcium second messenger pathway, leading to calcium release from intracellular stores and activation of protein kinase C. ADRA1B binds the catecholamine ligands norepinephrine and epinephrine. Can also couple to G(14) and G(16) proteins.

**APPLICATION**

To ensure optimal assay performance, AREX recommends conducting reagent titration tailored to each testing system for optimal detection results.

WB	1:500 - 1:1000
----	----------------

\*Results are sample-specific. Please refer to your local assay conditions and test parameters for reference.

**PRODUCT OVERVIEW**

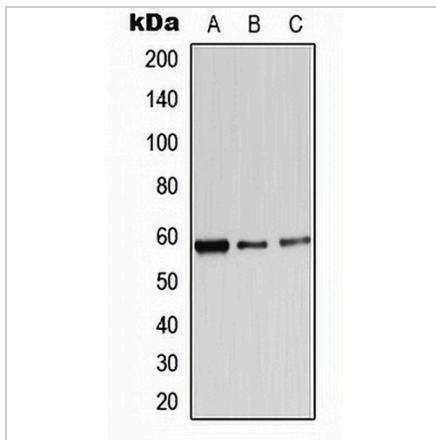
Description	Rabbit polyclonal antibody to Alpha-1B Adrenergic Receptor
Specificity	Recognizes endogenous levels of Alpha-1B Adrenergic Receptor protein.
Antibody Type	Primary antibody
Immunogen	KLH-conjugated synthetic peptide encompassing a sequence within the C-term region of human Alpha-1B Adrenergic Receptor. The exact sequence is proprietary.
Purification	The antibody was purified by immunogen affinity chromatography.
Molecular Weight	Predicted: 56 kD; Observed: 57 kD
Form/Buffer	Liquid in 0.42% Potassium phosphate, 0.87% Sodium chloride, pH 7.3, 30% glycerol, and 0.01% sodium azide.
Alternative Names	Alpha-1B adrenergic receptor; Alpha-1B adrenoreceptor; Alpha-1B adrenoceptor
Gene Symbol	ADRA1B
Entrez Gene	147(Human)
SwissProt	P35368(Human); P15823(Rat)

\*AREX continuously optimizes our products. Webpage content may not reflect the latest updates. For inquiries, please contact [info@arexbio.com](mailto:info@arexbio.com) or your local distributor.

\*Clone Number, Reactivity, Source/Host and Clonality can be found in the product name and Key Features section above.

**DATASHEET****Alpha-1B Adrenergic Receptor Rabbit Polyclonal Antibody**

CAT. NO. APA06631

**DATA**

Western blot analysis of Alpha-1B Adrenergic Receptor expression in A549 (A), HEK293T (B), PC12 (C) whole cell lysates. (Predicted band size: 56 kD; Observed band size: 57 kD)

**STORAGE**

Store at 4°C short term. For long term storage, store at -20°C, avoiding freeze/thaw cycles.

**NOTE**

For Research Use Only. Not for diagnostic, therapeutics, prophylactic or in vivo use.