

**DATASHEET**

**Annexin A3 Rabbit Polyclonal Antibody**

CAT. NO. APA06649

**KEY FEATURES**

Target	Annexin A3	Source / Host	Rabbit
Reactivity	Human, Mouse, Rat, Dog, Monkey, Rabbit	Clonality	Polyclonal
Applications	WB, IHC	Conjugation	Unconjugated
Form / Buffer	Liquid in 0.42% Potassium phosphate, 0.87% Sodium chloride, pH 7.3, 30% glycerol, and 0.01% sodium azide.		Storage at -20°C

**BACKGROUND**

Inhibitor of phospholipase A2, also possesses anti-coagulant properties. Also cleaves the cyclic bond of inositol 1,2-cyclic phosphate to form inositol 1-phosphate.

**APPLICATION**

To ensure optimal assay performance, AREX recommends conducting reagent titration tailored to each testing system for optimal detection results.

WB	1:500 - 1:1000
IHC	1:100 - 1:200

\*Results are sample-specific. Please refer to your local assay conditions and test parameters for reference.

**PRODUCT OVERVIEW**

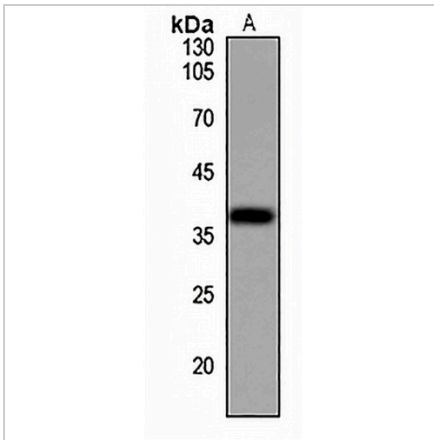
Description	Rabbit polyclonal antibody to Annexin A3
Specificity	Recognizes endogenous levels of Annexin A3 protein.
Antibody Type	Primary antibody
Immunogen	KLH-conjugated synthetic peptide encompassing a sequence within the center region of human Annexin A3. The exact sequence is proprietary.
Purification	The antibody was purified by immunogen affinity chromatography.
Molecular Weight	Predicted: 36 kD; Observed: 36 kD
Form/Buffer	Liquid in 0.42% Potassium phosphate, 0.87% Sodium chloride, pH 7.3, 30% glycerol, and 0.01% sodium azide.
Alternative Names	ANX3; Annexin A3; 35-alpha calcimedin; Annexin III; Annexin-3; Inositol 1,2-cyclic phosphate 2-phosphohydrolase; Lipocortin III; Placental anticoagulant protein III; PAP-III
Gene Symbol	ANXA3
Entrez Gene	306(Human); 11745(Mouse); 25291(Rat)
SwissProt	P12429(Human); O35639(Mouse); P14669(Rat)

\*AREX continuously optimizes our products. Webpage content may not reflect the latest updates. For inquiries, please contact [info@arexbio.com](mailto:info@arexbio.com) or your local distributor.

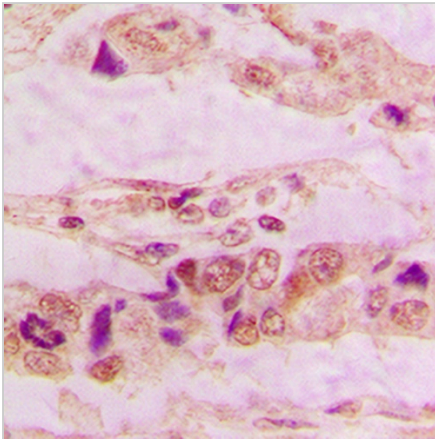
\*Clone Number, Reactivity, Source/Host and Clonality can be found in the product name and Key Features section above.

**DATASHEET****Annexin A3 Rabbit Polyclonal Antibody**

CAT. NO. APA06649

**DATA**

Western blot analysis of Annexin A3 expression in HeLa (A) whole cell lysates. (Predicted band size: 36 kD; Observed band size: 36 kD)



Immunohistochemical analysis of Annexin A3 staining in human lung cancer formalin fixed paraffin embedded tissue section. The section was pre-treated using heat mediated antigen retrieval with sodium citrate buffer (pH 6.0). The section was then incubated with the antibody at room temperature and detected using an HRP conjugated compact polymer system. DAB was used as the chromogen. The section was then counterstained with haematoxylin and mounted with DPX.

**STORAGE**

Store at 4°C short term. For long term storage, store at -20°C, avoiding freeze/thaw cycles.

**NOTE**

For Research Use Only. Not for diagnostic, therapeutics, prophylactic or in vivo use.