

DATASHEET

ARF6 Rabbit Polyclonal Antibody

CAT. NO. APA06670

KEY FEATURES

Target	ARF6	Source / Host	Rabbit
Reactivity	Human, Mouse, Rat, Chicken, Pig, Zebrafish	Clonality	Polyclonal
Applications	WB, IHC, IF/ICC	Conjugation	Unconjugated
Form / Buffer	Liquid in 0.42% Potassium phosphate, 0.87% Sodium chloride, pH 7.3, 30% glycerol, and 0.01% sodium azide.	Storage	at-20°C

BACKGROUND

GTP-binding protein involved in protein trafficking that regulates endocytic recycling and cytoskeleton remodeling . GTP-bound form plays an important role in the transport of multiple palmitoylated proteins from the Golgi to the plasma membrane . Required for normal completion of mitotic cytokinesis . Plays a role in the reorganization of the actin cytoskeleton and the formation of stress fibers . Involved in the regulation of dendritic spine development, contributing to the regulation of dendritic branching and filopodia extension . Potentiates the neurite outgrowth in primary neurons by interacting with the molecular adapter APBB1 . Plays an important role in membrane trafficking, during junctional remodeling and epithelial polarization .

APPLICATION

To ensure optimal assay performance, AREX recommends conducting reagent titration tailored to each testing system for optimal detection results.

WB	1:500 - 1:1000
IHC	1:50 - 1:100
IF/ICC	1:50 - 1:200

*Results are sample-specific. Please refer to your local assay conditions and test parameters for reference.

PRODUCT OVERVIEW

Description	Rabbit polyclonal antibody to ARF6
Specificity	Recognizes endogenous levels of ARF6 protein.
Antibody Type	Primary antibody
Immunogen	KLH-conjugated synthetic peptide encompassing a sequence within the center region of human ARF6. The exact sequence is proprietary.
Purification	The antibody was purified by immunogen affinity chromatography.
Molecular Weight	Predicted: 20 kD; Observed: 20 kD
Form/Buffer	Liquid in 0.42% Potassium phosphate, 0.87% Sodium chloride, pH 7.3, 30% glycerol, and 0.01% sodium azide.
Alternative Names	ADP-ribosylation factor 6
Gene Symbol	ARF6
Entrez Gene	382(Human); 11845(Mouse); 79121(Rat)
SwissProt	P62330(Human); P62331(Mouse); P62332(Rat)

*AREX continuously optimizes our products. Webpage content may not reflect the latest updates. For inquiries, please contact info@arexbio.com or your local distributor.

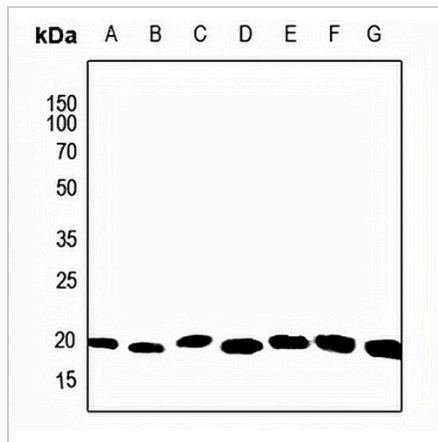
*Clone Number, Reactivity, Source/Host and Clonality can be found in the product name and Key Features section above.

DATASHEET

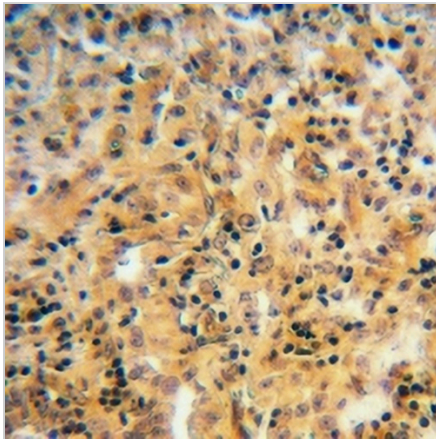
ARF6 Rabbit Polyclonal Antibody

CAT. NO. APA06670

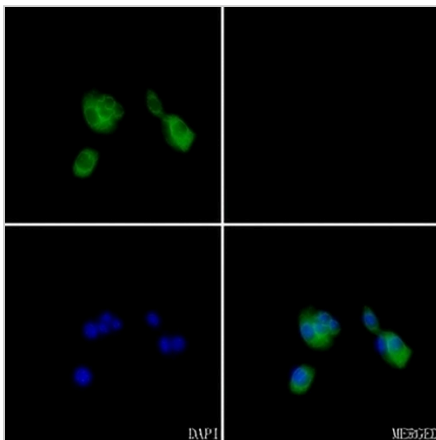
DATA



Western blot analysis of ARF6 expression in HEK293T (A), HeLa (B), A2780 (C), mouse liver (D), mouse spleen (E), rat liver (F), rat spleen (G) whole cell lysates. (Predicted band size: 20 kDa; Observed band size: 20 kDa)



Immunohistochemical analysis of ARF6 staining in human lung cancer formalin fixed paraffin embedded tissue section. The section was pre-treated using heat mediated antigen retrieval with sodium citrate buffer (pH 6.0). The section was then incubated with the antibody at room temperature and detected using an HRP conjugated compact polymer system. DAB was used as the chromogen. The section was then counterstained with haematoxylin and mounted with DPX.



Immunofluorescent analysis of ARF6 staining in C6 cells. Formalin-fixed cells were permeabilized with 0.1% Triton X-100 in TBS for 5-10 minutes and blocked with 3% BSA-PBS for 30 minutes at room temperature. Cells were probed with the primary antibody in 3% BSA-PBS and incubated overnight at 4 °C in a humidified chamber. Cells were washed with PBST and incubated with a AREX® Fluor 488 -conjugated secondary antibody (green) in PBS at room temperature in the dark. Phalloidin - AREX® Fluor 594 was used to stain Actin filaments (red). DAPI was used to stain the cell nuclei (blue).

STORAGE

Store at 4°C short term. For long term storage, store at -20°C, avoiding freeze/thaw cycles.

NOTE

For Research Use Only. Not for diagnostic, therapeutics, prophylactic or in vivo use.