

DATASHEET

RhoH Rabbit Polyclonal Antibody

CAT. NO. APA06674

KEY FEATURES

Target	RhoH	Source / Host	Rabbit
Reactivity	Human, Mouse	Clonality	Polyclonal
Applications	WB	Conjugation	Unconjugated
Form / Buffer	Liquid in 0.42% Potassium phosphate, 0.87% Sodium chloride, pH 7.3, 30% glycerol, and 0.01% sodium azide.		Storage at -20°C

BACKGROUND

Negative regulator of hematopoietic progenitor cell proliferation, survival and migration. Critical regulator of thymocyte development and T-cell antigen receptor (TCR) signaling by mediating recruitment and activation of ZAP70. Required for phosphorylation of CD3Z, membrane translocation of ZAP70 and subsequent activation of the ZAP70-mediated pathways. Essential for efficient beta-selection and positive selection by promoting the ZAP70-dependent phosphorylation of the LAT signalosome during pre-TCR and TCR signaling. Crucial for thymocyte maturation during DN3 to DN4 transition and during positive selection. Plays critical roles in mast cell function by facilitating phosphorylation of SYK in Fc epsilon RI-mediated signal transduction.

APPLICATION

To ensure optimal assay performance, AREX recommends conducting reagent titration tailored to each testing system for optimal detection results.

WB	1:500 - 1:1000
----	----------------

*Results are sample-specific. Please refer to your local assay conditions and test parameters for reference.

PRODUCT OVERVIEW

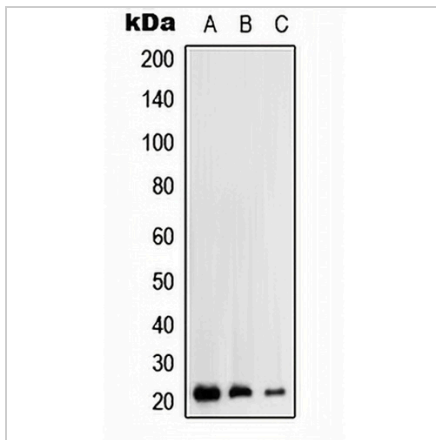
Description	Rabbit polyclonal antibody to RhoH
Specificity	Recognizes endogenous levels of RhoH protein.
Antibody Type	Primary antibody
Immunogen	KLH-conjugated synthetic peptide encompassing a sequence within the C-term region of human RhoH. The exact sequence is proprietary.
Purification	The antibody was purified by immunogen affinity chromatography.
Molecular Weight	Predicted: 21 kD; Observed: 25 kD
Form/Buffer	Liquid in 0.42% Potassium phosphate, 0.87% Sodium chloride, pH 7.3, 30% glycerol, and 0.01% sodium azide.
Alternative Names	ARHH; TTF; Rho-related GTP-binding protein RhoH; GTP-binding protein TTF; Translocation three four protein
Gene Symbol	RhoH
Entrez Gene	399(Human)
SwissProt	Q15669(Human)

*AREX continuously optimizes our products. Webpage content may not reflect the latest updates. For inquiries, please contact info@arexbio.com or your local distributor.

*Clone Number, Reactivity, Source/Host and Clonality can be found in the product name and Key Features section above.

DATASHEET**RhoH Rabbit Polyclonal Antibody**

CAT. NO. APA06674

DATA

Western blot analysis of RhoH expression in HEK293T (A), HepG2 (B), Jurkat (C) whole cell lysates. (Predicted band size: 21 kD; Observed band size: 25 kD)

STORAGE

Store at 4°C short term. For long term storage, store at -20°C, avoiding freeze/thaw cycles.

NOTE

For Research Use Only. Not for diagnostic, therapeutics, prophylactic or in vivo use.