

DATASHEET

BMP7 Rabbit Polyclonal Antibody

CAT. NO. APA06697

KEY FEATURES

Target	BMP7	Source / Host	Rabbit
Reactivity	Human, Mouse, Rat, Chicken, Dog, Monkey, Pig, Rabbit	Clonality	Polyclonal
Applications	WB, IHC	Conjugation	Unconjugated
Form / Buffer	Liquid in 0.42% Potassium phosphate, 0.87% Sodium chloride, pH 7.3, 30% glycerol, and 0.01% sodium azide.		Storage at -20°C

BACKGROUND

Growth factor of the TGF-beta superfamily that plays important role in various biological processes, including embryogenesis, hematopoiesis, neurogenesis and skeletal morphogenesis . Initiates the canonical BMP signaling cascade by associating with type I receptor ACVR1 and type II receptor ACVR2A . Once all three components are bound together in a complex at the cell surface, ACVR2A phosphorylates and activates ACVR1. In turn, ACVR1 propagates signal by phosphorylating SMAD1/5/8 that travel to the nucleus and act as activators and repressors of transcription of target genes . For specific functions such as growth cone collapse in developing spinal neurons and chemotaxis of monocytes, also uses BMP2 as type II receptor .

APPLICATION

To ensure optimal assay performance, AREX recommends conducting reagent titration tailored to each testing system for optimal detection results.

WB	1:500 - 1:1000
IHC	1:100 - 1:200

*Results are sample-specific. Please refer to your local assay conditions and test parameters for reference.

PRODUCT OVERVIEW

Description	Rabbit polyclonal antibody to BMP7
Specificity	Recognizes endogenous levels of BMP7 protein.
Antibody Type	Primary antibody
Immunogen	KLH-conjugated synthetic peptide encompassing a sequence within the center region of human BMP7. The exact sequence is proprietary.
Purification	The antibody was purified by immunogen affinity chromatography.
Molecular Weight	Predicted: 49 kD; Observed: 55 kD
Form/Buffer	Liquid in 0.42% Potassium phosphate, 0.87% Sodium chloride, pH 7.3, 30% glycerol, and 0.01% sodium azide.
Alternative Names	OP1; Bone morphogenetic protein 7; BMP-7; Osteogenic protein 1; OP-1; Eptotermin alfa
Gene Symbol	BMP7
Entrez Gene	655(Human); 12162(Mouse)
SwissProt	P18075(Human); P23359(Mouse)

*AREX continuously optimizes our products. Webpage content may not reflect the latest updates. For inquiries, please contact info@arexbio.com or your local distributor.

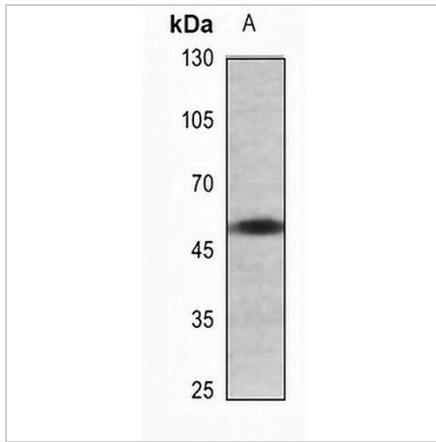
*Clone Number, Reactivity, Source/Host and Clonality can be found in the product name and Key Features section above.

DATASHEET

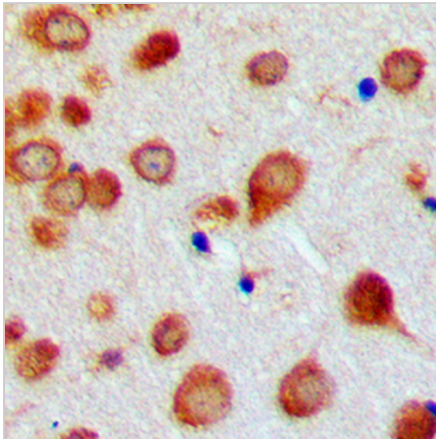
BMP7 Rabbit Polyclonal Antibody

CAT. NO. APA06697

DATA



Western blot analysis of BMP7 expression in mouse heart (A) whole cell lysates. (Predicted band size: 49 kD; Observed band size: 55 kD)



Immunohistochemical analysis of BMP7 staining in human brain formalin fixed paraffin embedded tissue section. The section was pre-treated using heat mediated antigen retrieval with sodium citrate buffer (pH 6.0). The section was then incubated with the antibody at room temperature and detected using an HRP conjugated compact polymer system. DAB was used as the chromogen. The section was then counterstained with haematoxylin and mounted with DPX.

STORAGE

Store at 4°C short term. For long term storage, store at -20°C, avoiding freeze/thaw cycles.

NOTE

For Research Use Only. Not for diagnostic, therapeutics, prophylactic or in vivo use.