

**DATASHEET**

**Caspase 5 p10 Rabbit Polyclonal Antibody**

CAT. NO. APA06736

**KEY FEATURES**

Target	Caspase 5 p10	Source / Host	Rabbit
Reactivity	Human, Mouse, Rat	Clonality	Polyclonal
Applications	WB, IHC, IF/ICC	Conjugation	Unconjugated
Form / Buffer	Liquid in 0.42% Potassium phosphate, 0.87% Sodium chloride, pH 7.3, 30% glycerol, and 0.01% sodium azide.		Storage at -20°C

**BACKGROUND**

Thiol protease that acts as a mediator of programmed cell death . Initiates pyroptosis, a programmed lytic cell death pathway through cleavage of Gasdermin-D (GSDMD): cleavage releases the N-terminal gasdermin moiety (Gasdermin-D, N-terminal) that binds to membranes and forms pores, triggering pyroptosis . Also mediates cleavage and maturation of IL18 . Cleavage of GSDMD and IL18 is not strictly dependent on the consensus cleavage site but depends on an exosite interface on CASP4 . During non-canonical inflammasome activation, cuts CGAS and may play a role in the regulation of antiviral innate immune activation .

**APPLICATION**

To ensure optimal assay performance, AREX recommends conducting reagent titration tailored to each testing system for optimal detection results.

WB	1:500 - 1:1000
IHC	1:50 - 1:100
IF/ICC	1:50 - 1:200

\*Results are sample-specific. Please refer to your local assay conditions and test parameters for reference.

**PRODUCT OVERVIEW**

Description	Rabbit polyclonal antibody to Caspase 5 p10
Specificity	Recognizes endogenous levels of Caspase 5 p10 protein.
Antibody Type	Primary antibody
Immunogen	KLH-conjugated synthetic peptide encompassing a sequence within the C-term region of human Caspase 5 p10. The exact sequence is proprietary.
Purification	The antibody was purified by immunogen affinity chromatography.
Molecular Weight	Predicted: 49 kD; Observed: 35 kD
Form/Buffer	Liquid in 0.42% Potassium phosphate, 0.87% Sodium chloride, pH 7.3, 30% glycerol, and 0.01% sodium azide.
Alternative Names	ICH3; Caspase-5; CASP-5; ICE(rel)-III; Protease ICH-3; Protease TY
Gene Symbol	CASP5
Entrez Gene	838(Human)
SwissProt	P51878(Human)

\*AREX continuously optimizes our products. Webpage content may not reflect the latest updates. For inquiries, please contact [info@arexbio.com](mailto:info@arexbio.com) or your local distributor.

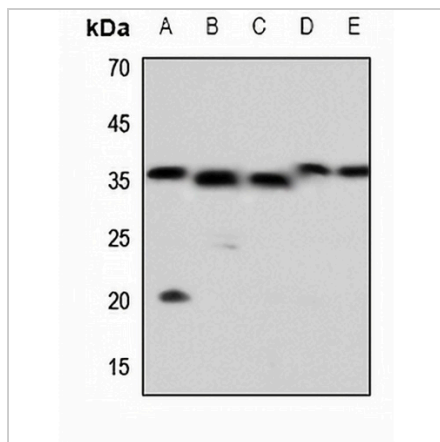
\*Clone Number, Reactivity, Source/Host and Clonality can be found in the product name and Key Features section above.

**DATASHEET**

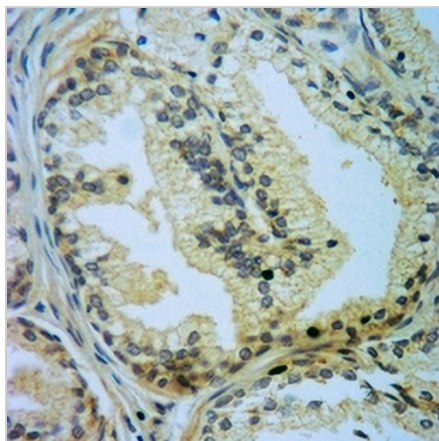
**Caspase 5 p10 Rabbit Polyclonal Antibody**

CAT. NO. APA06736

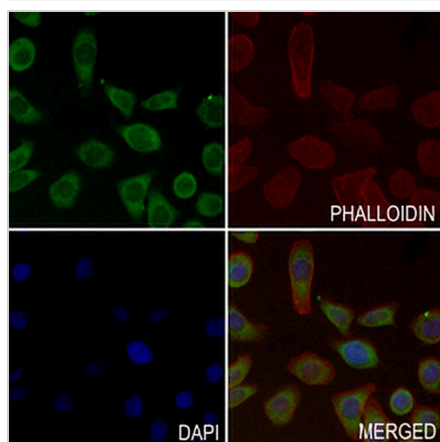
**DATA**



Western blot analysis of Caspase 5 p10 expression in mouse liver (A), mouse kidney (B), mouse testis (C), rat liver (D), rat kidney (E) whole cell lysates. (Predicted band size: 49 kDa; Observed band size: 35 kDa)



Immunohistochemical analysis of Caspase 5 p10 staining in human prostate formalin fixed paraffin embedded tissue section. The section was pre-treated using heat mediated antigen retrieval with sodium citrate buffer (pH 6.0). The section was then incubated with the antibody at room temperature and detected using an HRP conjugated compact polymer system. DAB was used as the chromogen. The section was then counterstained with haematoxylin and mounted with DPX.



Immunofluorescent analysis of Caspase 5 p10 staining in PCCL cells. Formalin-fixed cells were permeabilized with 0.1% Triton X-100 in TBS for 5-10 minutes and blocked with 3% BSA-PBS for 30 minutes at room temperature. Cells were probed with the primary antibody in 3% BSA-PBS and incubated overnight at 4 °C in a humidified chamber. Cells were washed with PBST and incubated with a AREX® Fluor 488 -conjugated secondary antibody (green) in PBS at room temperature in the dark. Phalloidin - AREX® Fluor 594 was used to stain Actin filaments (red). DAPI was used to stain the cell nuclei (blue).

**STORAGE**

Store at 4°C short term. For long term storage, store at -20°C, avoiding freeze/thaw cycles.

**NOTE**

For Research Use Only. Not for diagnostic, therapeutics, prophylactic or in vivo use.