

DATASHEET

Caspase 8 (Phospho-S347) Rabbit Polyclonal Antibody

CAT. NO. APA06741

KEY FEATURES

Target	Caspase 8 (Phospho-S347)	Source / Host	Rabbit
Reactivity	Human, Monkey	Clonality	Polyclonal
Applications	WB, IHC	Conjugation	Unconjugated
Form / Buffer	Liquid in 0.42% Potassium phosphate, 0.87% Sodium chloride, pH 7.3, 30% glycerol, and 0.01% sodium azide.	Storage	at-20°C

BACKGROUND

Thiol protease that plays a key role in programmed cell death by acting as a molecular switch for apoptosis, necroptosis and pyroptosis, and is required to prevent tissue damage during embryonic development and adulthood . Initiator protease that induces extrinsic apoptosis by mediating cleavage and activation of effector caspases responsible for FAS/CD95-mediated and TNFRSF1A-induced cell death . Cleaves and activates effector caspases CASP3, CASP4, CASP6, CASP7, CASP9 and CASP10 . Binding to the adapter molecule FADD recruits it to either receptor FAS/TNFRSF6 or TNFRSF1A . The resulting aggregate called the death-inducing signaling complex (DISC) performs CASP8 proteolytic activation .

APPLICATION

To ensure optimal assay performance, AREX recommends conducting reagent titration tailored to each testing system for optimal detection results.

WB	1:500 - 1:1000
IHC	1:100 - 1:200

*Results are sample-specific. Please refer to your local assay conditions and test parameters for reference.

PRODUCT OVERVIEW

Description	Rabbit polyclonal antibody to Caspase 8 (Phospho-S347)
Specificity	Recognizes endogenous levels of Caspase 8 protein only when phosphorylated at S347.
Antibody Type	Primary antibody
Immunogen	KLH-conjugated synthetic phosphopeptide corresponding to residues surrounding S347 of human Caspase 8 protein. The exact sequence is proprietary.
Purification	The antibody was purified by immunogen affinity chromatography.
Molecular Weight	Predicted: 55 kD; Observed: 57 kD
Form/Buffer	Liquid in 0.42% Potassium phosphate, 0.87% Sodium chloride, pH 7.3, 30% glycerol, and 0.01% sodium azide.
Alternative Names	MCH5; Caspase-8; CASP-8; Apoptotic cysteine protease; Apoptotic protease Mch-5; CAP4; FADD-homologous ICE/ced-3-like protease; FADD-like ICE; FLICE; ICE-like apoptotic protease 5; MORT1-associated ced-3 homolog; MACH
Gene Symbol	CASP8
Entrez Gene	841(Human)
SwissProt	Q14790(Human)

*AREX continuously optimizes our products. Webpage content may not reflect the latest updates. For inquiries, please contact info@arexbio.com or your local distributor.

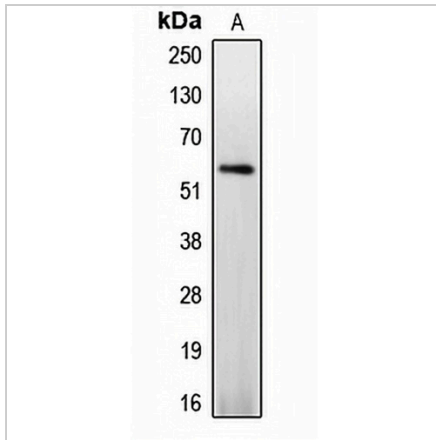
*Clone Number, Reactivity, Source/Host and Clonality can be found in the product name and Key Features section above.

DATASHEET

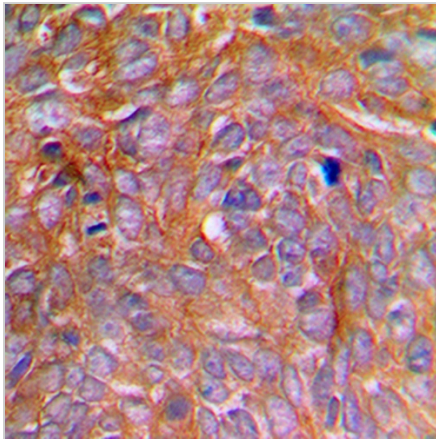
Caspase 8 (Phospho-S347) Rabbit Polyclonal Antibody

CAT. NO. APA06741

DATA



Western blot analysis of Caspase 8 (Phospho-S347) expression in Jurkat PMA-treated (A) whole cell lysates. (Predicted band size: 55 kD; Observed band size: 57 kD)



Immunohistochemical analysis of Caspase 8 (Phospho-S347) staining in human breast cancer formalin fixed paraffin embedded tissue section. The section was pre-treated using heat mediated antigen retrieval with sodium citrate buffer (pH 6.0). The section was then incubated with the antibody at room temperature and detected using an HRP conjugated compact polymer system. DAB was used as the chromogen. The section was then counterstained with haematoxylin and mounted with DPX.

STORAGE

Store at 4°C short term. For long term storage, store at -20°C, avoiding freeze/thaw cycles.

NOTE

For Research Use Only. Not for diagnostic, therapeutics, prophylactic or in vivo use.