

DATASHEET

Calcium Sensing Receptor (Phospho-T888) Rabbit Polyclonal Antibody

CAT. NO. APA06745

KEY FEATURES

Target	Calcium Sensing Receptor (Phospho-T888)	Source / Host	Rabbit
Reactivity	Human, Mouse, Rat, Bovine, Monkey, Pig	Clonality	Polyclonal
Applications	WB, IF/ICC	Conjugation	Unconjugated
Form / Buffer	Liquid in 0.42% Potassium phosphate, 0.87% Sodium chloride, pH 7.3, 30% glycerol, and 0.01% sodium azide.		Storage at -20°C

BACKGROUND

G-protein-coupled receptor that senses changes in the extracellular concentration of calcium ions and plays a key role in maintaining calcium homeostasis . Senses fluctuations in the circulating calcium concentration: activated by elevated circulating calcium, leading to decreased parathyroid hormone (PTH) secretion in parathyroid glands . In kidneys, acts as a key regulator of renal tubular calcium resorption . Ligand binding causes a conformation change that triggers signaling via guanine nucleotide-binding proteins (G-proteins) and modulates the activity of downstream effectors . CASR is coupled with different G(q)/G(11), G(i)/G(o)- or G(s)-classes of G-proteins depending on the context .

APPLICATION

To ensure optimal assay performance, AREX recommends conducting reagent titration tailored to each testing system for optimal detection results.

WB	1:500 - 1:1000
IF/ICC	1:50 - 1:200

*Results are sample-specific. Please refer to your local assay conditions and test parameters for reference.

PRODUCT OVERVIEW

Description	Rabbit polyclonal antibody to Calcium Sensing Receptor (Phospho-T888)
Specificity	Recognizes endogenous levels of Calcium Sensing Receptor protein only when phosphorylated at T888.
Antibody Type	Primary antibody
Immunogen	KLH-conjugated synthetic phosphopeptide corresponding to residues surrounding T888 of human Calcium Sensing Receptor protein. The exact sequence is proprietary.
Purification	The antibody was purified by immunogen affinity chromatography.
Molecular Weight	Predicted: 120 kD; Observed: 140 kD
Form/Buffer	Liquid in 0.42% Potassium phosphate, 0.87% Sodium chloride, pH 7.3, 30% glycerol, and 0.01% sodium azide.
Alternative Names	GPRC2A; PCAR1; Extracellular calcium-sensing receptor; CaSR; Parathyroid cell calcium-sensing receptor 1; PCaR1
Gene Symbol	CASR
Entrez Gene	846(Human); 12374(Mouse); 24247(Rat)
SwissProt	P41180(Human); Q9QY96(Mouse); P48442(Rat)

*AREX continuously optimizes our products. Webpage content may not reflect the latest updates. For inquiries, please contact info@arexbio.com or your local distributor.

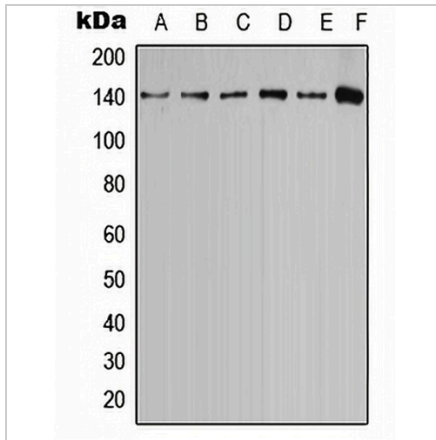
*Clone Number, Reactivity, Source/Host and Clonality can be found in the product name and Key Features section above.

DATASHEET

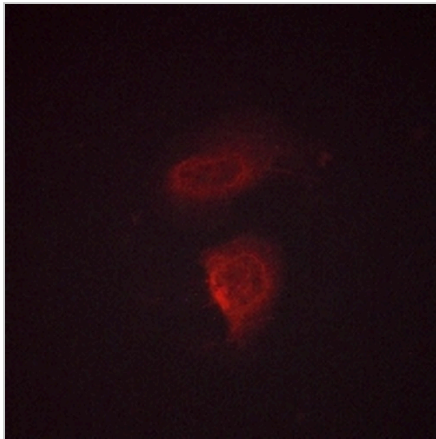
Calcium Sensing Receptor (Phospho-T888) Rabbit Polyclonal Antibody

CAT. NO. APA06745

DATA



Western blot analysis of Calcium Sensing Receptor (Phospho-T888) expression in MCF7 (A), MDCK (B), U2OS (C), SP2/O (D), PC12 (E), rat brain (F) whole cell lysates. (Predicted band size: 120 kD; Observed band size: 140 kD)



Immunofluorescent analysis of Calcium Sensing Receptor (Phospho-T888) staining in HeLa cells. Formalin-fixed cells were permeabilized with 0.1% Triton X-100 in TBS for 5-10 minutes and blocked with 3% BSA-PBS for 30 minutes at room temperature. Cells were probed with the primary antibody in 3% BSA-PBS and incubated overnight at 4 °C in a humidified chamber. Cells were washed with PBST and incubated with a AREX® Fluor 594-conjugated secondary antibody (red) in PBS at room temperature in the dark.

STORAGE

Store at 4°C short term. For long term storage, store at -20°C, avoiding freeze/thaw cycles.

NOTE

For Research Use Only. Not for diagnostic, therapeutics, prophylactic or in vivo use.