

DATASHEET

CCKBR Rabbit Polyclonal Antibody

CAT. NO. APA06754

KEY FEATURES

Target	CCKBR	Source / Host	Rabbit
Reactivity	Human, Mouse, Bovine, Monkey	Clonality	Polyclonal
Applications	WB, IF/ICC	Conjugation	Unconjugated
Form / Buffer	Liquid in 0.42% Potassium phosphate, 0.87% Sodium chloride, pH 7.3, 30% glycerol, and 0.01% sodium azide.		Storage at -20°C

BACKGROUND

Receptor for the peptide hormones gastrin and cholecystokinin (CCK). Expressed throughout the central nervous system, where it modulates processes such as anxiety, analgesia, arousal and neuroleptic activity. Couples to both GNAI1 and GNAQ signaling pathways, but not to GNAS . Expressed throughout the central nervous system, where it modulates processes such as anxiety, analgesia, arousal and neuroleptic activity. Couples to both GNAI1 and GNAQ signaling pathways, but not to GNAS . Upon gastrin activation, reduces glucose absorption in intestinal epithelial cells by downregulating SGLT1 and GLUT2 expression through suppression of the PI3K/Akt/eIF4B pathway . In the kidney, decreases SGLT2 expression under high-glucose conditions via ERK/NF-kappa-B signaling .

APPLICATION

To ensure optimal assay performance, AREX recommends conducting reagent titration tailored to each testing system for optimal detection results.

WB	1:500 - 1:1000
IF/ICC	1:50 - 1:200

*Results are sample-specific. Please refer to your local assay conditions and test parameters for reference.

PRODUCT OVERVIEW

Description	Rabbit polyclonal antibody to CCKBR
Specificity	Recognizes endogenous levels of CCKBR protein.
Antibody Type	Primary antibody
Immunogen	KLH-conjugated synthetic peptide encompassing a sequence within the N-term region of human CCKBR. The exact sequence is proprietary.
Purification	The antibody was purified by immunogen affinity chromatography.
Molecular Weight	Predicted: 48 kD; Observed: 48 kD
Form/Buffer	Liquid in 0.42% Potassium phosphate, 0.87% Sodium chloride, pH 7.3, 30% glycerol, and 0.01% sodium azide.
Alternative Names	CCKRB; Gastrin/cholecystokinin type B receptor; CCK-B receptor; CCK-BR; Cholecystokinin-2 receptor; CCK2-R
Gene Symbol	CCKBR
Entrez Gene	887(Human)
SwissProt	P32239(Human)

*AREX continuously optimizes our products. Webpage content may not reflect the latest updates. For inquiries, please contact info@arexbio.com or your local distributor.

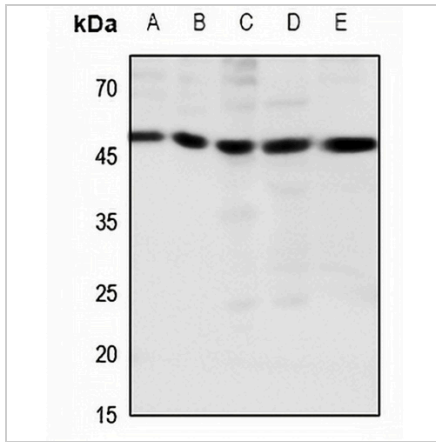
*Clone Number, Reactivity, Source/Host and Clonality can be found in the product name and Key Features section above.

DATASHEET

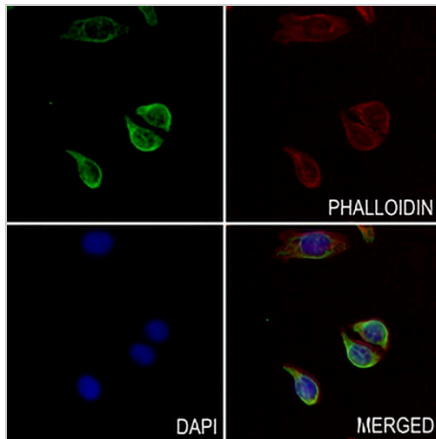
CCKBR Rabbit Polyclonal Antibody

CAT. NO. APA06754

DATA



Western blot analysis of CCKBR expression in HEK293T (A), HeLa (B), H460 (C), mouse lung (D), mouse brain (E) whole cell lysates. (Predicted band size: 48 kDa; Observed band size: 48 kDa)



Immunofluorescent analysis of CCKBR staining in KYSE30 cells. Formalin-fixed cells were permeabilized with 0.1% Triton X-100 in TBS for 5-10 minutes and blocked with 3% BSA-PBS for 30 minutes at room temperature. Cells were probed with the primary antibody in 3% BSA-PBS and incubated overnight at 4 °C in a humidified chamber. Cells were washed with PBST and incubated with a AREX® Fluor 488 -conjugated secondary antibody (green) in PBS at room temperature in the dark. Phalloidin - AREX® Fluor 594 was used to stain Actin filaments (red). DAPI was used to stain the cell nuclei (blue).

STORAGE

Store at 4°C short term. For long term storage, store at -20°C, avoiding freeze/thaw cycles.

NOTE

For Research Use Only. Not for diagnostic, therapeutics, prophylactic or in vivo use.