

DATASHEET

Cyclin B1 (Phospho-S126) Rabbit Polyclonal Antibody

CAT. NO. APA06755

KEY FEATURES

Target	Cyclin B1 (Phospho-S126)	Source / Host	Rabbit
Reactivity	Human, Mouse	Clonality	Polyclonal
Applications	WB, IHC	Conjugation	Unconjugated
Form / Buffer	Liquid in 0.42% Potassium phosphate, 0.87% Sodium chloride, pH 7.3, 30% glycerol, and 0.01% sodium azide.	Storage	at-20°C

BACKGROUND

Essential for the control of the cell cycle at the G2/M (mitosis) transition.

APPLICATION

To ensure optimal assay performance, AREX recommends conducting reagent titration tailored to each testing system for optimal detection results.

WB	1:500 - 1:1000
IHC	1:50 - 1:100

*Results are sample-specific. Please refer to your local assay conditions and test parameters for reference.

PRODUCT OVERVIEW

Description	Rabbit polyclonal antibody to Cyclin B1 (Phospho-S126)
Specificity	Recognizes endogenous levels of Cyclin B1 protein only when phosphorylated at S126.
Antibody Type	Primary antibody
Immunogen	KLH-conjugated synthetic phosphopeptide corresponding to residues surrounding S126 of human Cyclin B1 protein. The exact sequence is proprietary.
Purification	The antibody was purified by immunogen affinity chromatography.
Molecular Weight	Predicted: 48 kD; Observed: 60 kD
Form/Buffer	Liquid in 0.42% Potassium phosphate, 0.87% Sodium chloride, pH 7.3, 30% glycerol, and 0.01% sodium azide.
Alternative Names	CCNB; G2/mitotic-specific cyclin-B1
Gene Symbol	CCNB1
Entrez Gene	891(Human); 268697(Mouse)
SwissProt	P14635(Human); P24860(Mouse)

*AREX continuously optimizes our products. Webpage content may not reflect the latest updates. For inquiries, please contact info@arexbio.com or your local distributor.

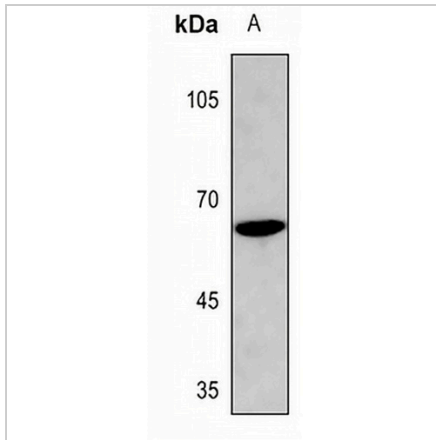
*Clone Number, Reactivity, Source/Host and Clonality can be found in the product name and Key Features section above.

DATASHEET

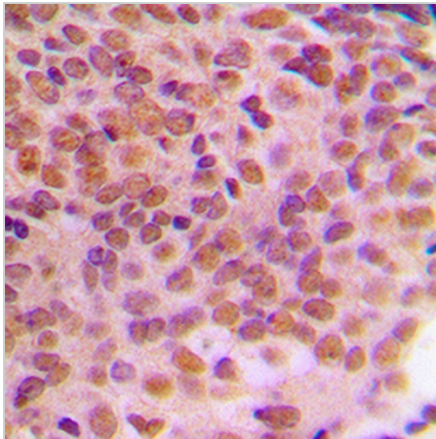
Cyclin B1 (Phospho-S126) Rabbit Polyclonal Antibody

CAT. NO. APA06755

DATA



Western blot analysis of Cyclin B1 (Phospho-S126) expression in K562 (A) whole cell lysates. (Predicted band size: 48 kD; Observed band size: 60 kD)



Immunohistochemical analysis of Cyclin B1 (Phospho-S126) staining in human breast cancer formalin fixed paraffin embedded tissue section. The section was pre-treated using heat mediated antigen retrieval with sodium citrate buffer (pH 6.0). The section was then incubated with the antibody at room temperature and detected using an HRP conjugated compact polymer system. DAB was used as the chromogen. The section was then counterstained with haematoxylin and mounted with DPX.

STORAGE

Store at 4°C short term. For long term storage, store at -20°C, avoiding freeze/thaw cycles.

NOTE

For Research Use Only. Not for diagnostic, therapeutics, prophylactic or in vivo use.