

## DATASHEET

# CDC25A (Phospho-S75) Rabbit Polyclonal Antibody

CAT. NO. APA06779

### KEY FEATURES

Target	CDC25A (Phospho-S75)	Source / Host	Rabbit
Reactivity	Human	Clonality	Polyclonal
Applications	WB, IHC	Conjugation	Unconjugated
Form / Buffer	Liquid in 0.42% Potassium phosphate, 0.87% Sodium chloride, pH 7.3, 30% glycerol, and 0.01% sodium azide.		Storage at -20°C

### BACKGROUND

Tyrosine protein phosphatase which functions as a dosage-dependent inducer of mitotic progression . Directly dephosphorylates CDK1 and stimulates its kinase activity . Also dephosphorylates CDK2 in complex with cyclin-E, in vitro .

### APPLICATION

To ensure optimal assay performance, AREX recommends conducting reagent titration tailored to each testing system for optimal detection results.

WB	1:500 - 1:1000
IHC	1:100 - 1:200

\*Results are sample-specific. Please refer to your local assay conditions and test parameters for reference.

### PRODUCT OVERVIEW

Description	Rabbit polyclonal antibody to CDC25A (Phospho-S75)
Specificity	Recognizes endogenous levels of CDC25A protein only when phosphorylated at S75.
Antibody Type	Primary antibody
Immunogen	KLH-conjugated synthetic phosphopeptide corresponding to residues surrounding S75 of human CDC25A protein. The exact sequence is proprietary.
Purification	The antibody was purified by immunogen affinity chromatography.
Molecular Weight	Predicted: 59 kD; Observed: 70 kD
Form/Buffer	Liquid in 0.42% Potassium phosphate, 0.87% Sodium chloride, pH 7.3, 30% glycerol, and 0.01% sodium azide.
Alternative Names	M-phase inducer phosphatase 1; Dual specificity phosphatase Cdc25A
Gene Symbol	CDC25A
Entrez Gene	993(Human)
SwissProt	P30304(Human)

\*AREX continuously optimizes our products. Webpage content may not reflect the latest updates. For inquiries, please contact [info@arexbio.com](mailto:info@arexbio.com) or your local distributor.

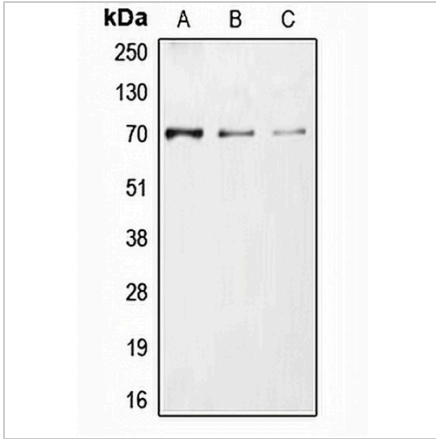
\*Clone Number, Reactivity, Source/Host and Clonality can be found in the product name and Key Features section above.

**DATASHEET**

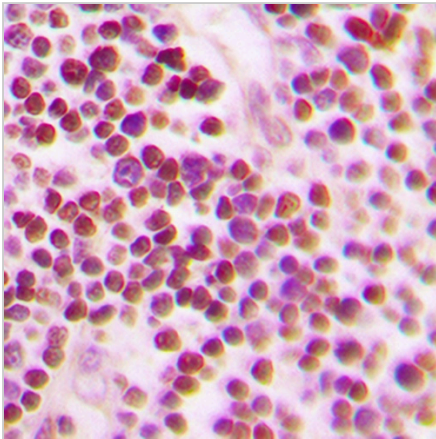
**CDC25A (Phospho-S75) Rabbit Polyclonal Antibody**

CAT. NO. APA06779

**DATA**



Western blot analysis of CDC25A (Phospho-S75) expression in HEK293T UV-treated (A), Jurkat UV-treated (B), NIH3T3 (C) whole cell lysates. (Predicted band size: 59 kD; Observed band size: 70 kD)



Immunohistochemical analysis of CDC25A (Phospho-S75) staining in human tonsil formalin fixed paraffin embedded tissue section. The section was pre-treated using heat mediated antigen retrieval with sodium citrate buffer (pH 6.0). The section was then incubated with the antibody at room temperature and detected using an HRP conjugated compact polymer system. DAB was used as the chromogen. The section was then counterstained with haematoxylin and mounted with DPX.

**STORAGE**

Store at 4°C short term. For long term storage, store at -20°C, avoiding freeze/thaw cycles.

**NOTE**

For Research Use Only. Not for diagnostic, therapeutics, prophylactic or in vivo use.