

**DATASHEET**

**C/EBP delta/epsilon Rabbit Polyclonal Antibody**

CAT. NO. APA06799

**KEY FEATURES**

Target	C/EBP delta/epsilon	Source / Host	Rabbit
Reactivity	Human, Mouse, Rat, Bovine, Sheep	Clonality	Polyclonal
Applications	WB, IHC, IF/ICC	Conjugation	Unconjugated
Form / Buffer	Liquid in 0.42% Potassium phosphate, 0.87% Sodium chloride, pH 7.3, 30% glycerol, and 0.01% sodium azide.		Storage at-20°C

**BACKGROUND**

Transcription activator that recognizes two different DNA motifs: the CCAAT homology common to many promoters and the enhanced core homology common to many enhancers . Important transcription factor regulating the expression of genes involved in immune and inflammatory responses . Transcriptional activator that enhances IL6 transcription alone and as heterodimer with CEBPB .

**APPLICATION**

To ensure optimal assay performance, AREX recommends conducting reagent titration tailored to each testing system for optimal detection results.

WB	1:500 - 1:1000
IHC	1:100 - 1:200
IF/ICC	1:100 - 1:500

\*Results are sample-specific. Please refer to your local assay conditions and test parameters for reference.

**PRODUCT OVERVIEW**

Description	Rabbit polyclonal antibody to C/EBP delta/epsilon
Specificity	Recognizes endogenous levels of C/EBP delta/epsilon protein.
Antibody Type	Primary antibody
Immunogen	KLH-conjugated synthetic peptide encompassing a sequence within the C-term region of human C/EBP delta/epsilon. The exact sequence is proprietary.
Purification	The antibody was purified by immunogen affinity chromatography.
Molecular Weight	Predicted: 28; Observed: 28 kD
Form/Buffer	Liquid in 0.42% Potassium phosphate, 0.87% Sodium chloride, pH 7.3, 30% glycerol, and 0.01% sodium azide.
Alternative Names	CEBPD; CCAAT/enhancer-binding protein delta; C/EBP delta; Nuclear factor NF-IL6-beta; NF-IL6-beta; CEBPE; CCAAT/enhancer-binding protein epsilon; C/EBP epsilon
Gene Symbol	CEBPD; CEBPE
Entrez Gene	1052; 1053(Human); 12609; 110794(Mouse); 25695; 25410(Rat)
SwissProt	P49716; Q15744(Human); Q00322; Q6PZD9(Mouse); Q03484; P56261(Rat)

\*AREX continuously optimizes our products. Webpage content may not reflect the latest updates. For inquiries, please contact [info@arexbio.com](mailto:info@arexbio.com) or your local distributor.

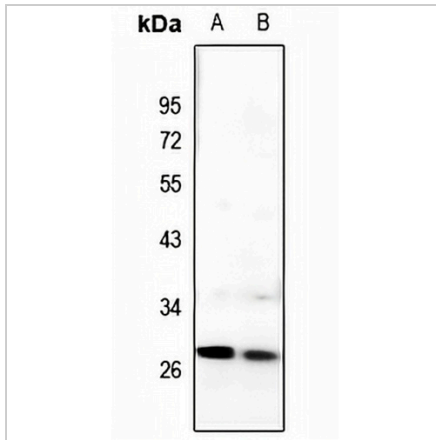
\*Clone Number, Reactivity, Source/Host and Clonality can be found in the product name and Key Features section above.

**DATASHEET**

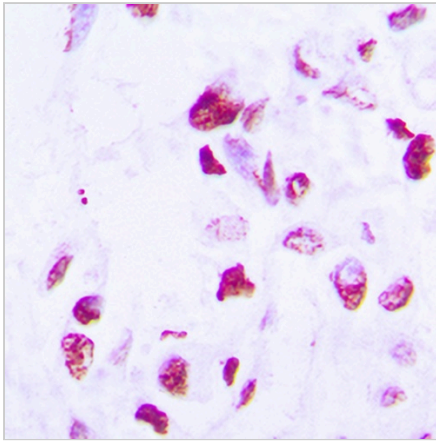
**C/EBP delta/epsilon Rabbit Polyclonal Antibody**

CAT. NO. APA06799

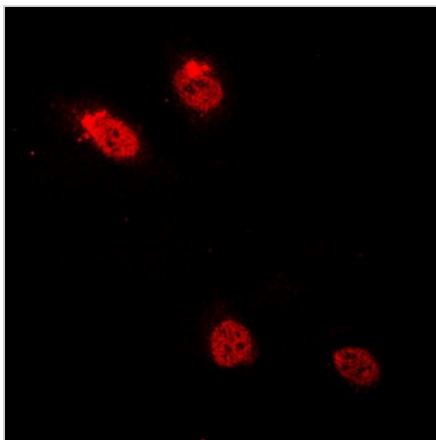
**DATA**



Western blot analysis of C/EBP delta/epsilon expression in CT26 (A), HeLa (B) whole cell lysates. (Predicted band size: 28; 30 kD; Observed band size: 28 kD)



Immunohistochemical analysis of C/EBP delta/epsilon staining in human lung cancer formalin fixed paraffin embedded tissue section. The section was pre-treated using heat mediated antigen retrieval with sodium citrate buffer (pH 6.0). The section was then incubated with the antibody at room temperature and detected using an HRP conjugated compact polymer system. DAB was used as the chromogen. The section was then counterstained with haematoxylin and mounted with DPX.



Immunofluorescent analysis of C/EBP delta/epsilon staining in HepG2 cells. Formalin-fixed cells were permeabilized with 0.1% Triton X-100 in TBS for 5-10 minutes and blocked with 3% BSA-PBS for 30 minutes at room temperature. Cells were probed with the primary antibody in 3% BSA-PBS and incubated overnight at 4 °C in a humidified chamber. Cells were washed with PBST and incubated with a DyLight 594-conjugated secondary antibody (red) in PBS at room temperature in the dark.

**STORAGE**

Store at 4°C short term. For long term storage, store at -20°C, avoiding freeze/thaw cycles.

**NOTE**

For Research Use Only. Not for diagnostic, therapeutics, prophylactic or in vivo use.