

DATASHEET

Chromogranin A Rabbit Polyclonal Antibody

CAT. NO. APA06807

KEY FEATURES

Target	Chromogranin A	Source / Host	Rabbit
Reactivity	Human, Mouse, Rat, Bovine, Monkey	Clonality	Polyclonal
Applications	WB, IHC	Conjugation	Unconjugated
Form / Buffer	Liquid in 0.42% Potassium phosphate, 0.87% Sodium chloride, pH 7.3, 30% glycerol, and 0.01% sodium azide.		Storage at-20°C

BACKGROUND

Strongly inhibits glucose induced insulin release from the pancreas.; [Catestatin]: Inhibits catecholamine release from chromaffin cells and noradrenergic neurons by acting as a non-competitive nicotinic cholinergic antagonist . Displays antibacterial activity against Gram-positive bacteria S.aureus and M.luteus, and Gram-negative bacteria E.coli and P.aeruginosa . Can induce mast cell migration, degranulation and production of cytokines and chemokines . Acts as a potent scavenger of free radicals in vitro . May play a role in the regulation of cardiac function and blood pressure .

APPLICATION

To ensure optimal assay performance, AREX recommends conducting reagent titration tailored to each testing system for optimal detection results.

WB	1:500 - 1:1000
IHC	1:50 - 1:100

*Results are sample-specific. Please refer to your local assay conditions and test parameters for reference.

PRODUCT OVERVIEW

Description	Rabbit polyclonal antibody to Chromogranin A
Specificity	Recognizes endogenous levels of Chromogranin A protein.
Antibody Type	Primary antibody
Immunogen	KLH-conjugated synthetic peptide encompassing a sequence within the center region of human Chromogranin A. The exact sequence is proprietary.
Purification	The antibody was purified by immunogen affinity chromatography.
Molecular Weight	Predicted: 50 kD; Observed: 86 kD
Form/Buffer	Liquid in 0.42% Potassium phosphate, 0.87% Sodium chloride, pH 7.3, 30% glycerol, and 0.01% sodium azide.
Alternative Names	Chromogranin-A; CgA; Pituitary secretory protein I; SP-I
Gene Symbol	CHGA
Entrez Gene	1113(Human); 12652(Mouse)
SwissProt	P10645(Human); P26339(Mouse); P10354(Rat)

*AREX continuously optimizes our products. Webpage content may not reflect the latest updates. For inquiries, please contact info@arexbio.com or your local distributor.

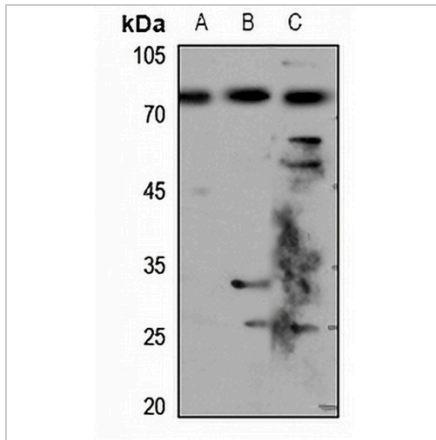
*Clone Number, Reactivity, Source/Host and Clonality can be found in the product name and Key Features section above.

DATASHEET

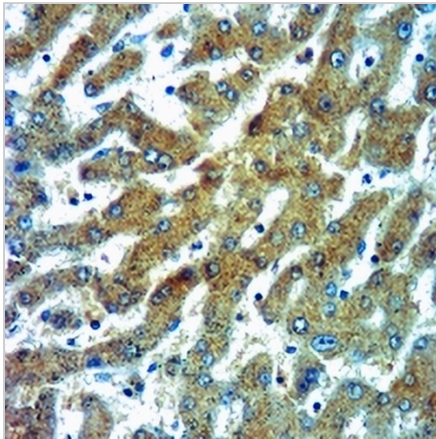
Chromogranin A Rabbit Polyclonal Antibody

CAT. NO. APA06807

DATA



Western blot analysis of Chromogranin A expression in H1688 (A), mouse lung (B), rat lung (C) whole cell lysates. (Predicted band size: 50 kD; Observed band size: 86 kD)



Immunohistochemical analysis of Chromogranin A staining in human liver cancer formalin fixed paraffin embedded tissue section. The section was pre-treated using heat mediated antigen retrieval with sodium citrate buffer (pH 6.0). The section was then incubated with the antibody at room temperature and detected using an HRP conjugated compact polymer system. DAB was used as the chromogen. The section was then counterstained with haematoxylin and mounted with DPX.

STORAGE

Store at 4°C short term. For long term storage, store at -20°C, avoiding freeze/thaw cycles.

NOTE

For Research Use Only. Not for diagnostic, therapeutics, prophylactic or in vivo use.