

DATASHEET

CLCN7 Rabbit Polyclonal Antibody

CAT. NO. APA06816

KEY FEATURES

Target	CLCN7	Source / Host	Rabbit
Reactivity	Human, Mouse, Rat	Clonality	Polyclonal
Applications	WB, IHC	Conjugation	Unconjugated
Form / Buffer	Liquid in 0.42% Potassium phosphate, 0.87% Sodium chloride, pH 7.3, 30% glycerol, and 0.01% sodium azide.		Storage at-20°C

BACKGROUND

Slowly voltage-gated channel mediating the exchange of chloride ions against protons . Functions as antiporter and contributes to the acidification of the lysosome lumen and may be involved in maintaining lysosomal pH . The CLC channel family contains both chloride channels and proton-coupled anion transporters that exchange chloride or another anion for protons . The presence of conserved gating glutamate residues is typical for family members that function as antiporters .

APPLICATION

To ensure optimal assay performance, AREX recommends conducting reagent titration tailored to each testing system for optimal detection results.

WB	1:500 - 1:1000
IHC	1:50 - 1:100

*Results are sample-specific. Please refer to your local assay conditions and test parameters for reference.

PRODUCT OVERVIEW

Description	Rabbit polyclonal antibody to CLCN7
Specificity	Recognizes endogenous levels of CLCN7 protein.
Antibody Type	Primary antibody
Immunogen	KLH-conjugated synthetic peptide encompassing a sequence within the N-term region of human CLCN7. The exact sequence is proprietary.
Purification	The antibody was purified by immunogen affinity chromatography.
Molecular Weight	Predicted: 88 kD; Observed: 75; 110 kD
Form/Buffer	Liquid in 0.42% Potassium phosphate, 0.87% Sodium chloride, pH 7.3, 30% glycerol, and 0.01% sodium azide.
Alternative Names	H(+)/Cl(-) exchange transporter 7; Chloride channel 7 alpha subunit; Chloride channel protein 7; ClC-7
Gene Symbol	CLCN7
Entrez Gene	1186(Human); 26373(Mouse); 29233(Rat)
SwissProt	P51798(Human); O70496(Mouse); P51799(Rat)

*AREX continuously optimizes our products. Webpage content may not reflect the latest updates. For inquiries, please contact info@arexbio.com or your local distributor.

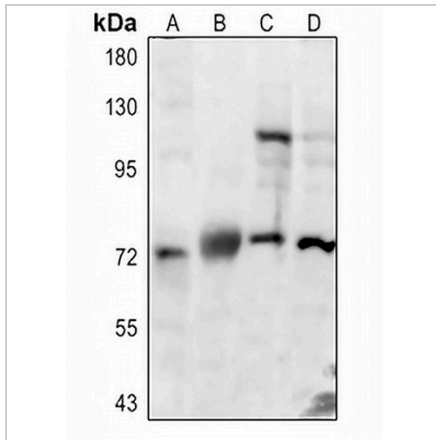
*Clone Number, Reactivity, Source/Host and Clonality can be found in the product name and Key Features section above.

DATASHEET

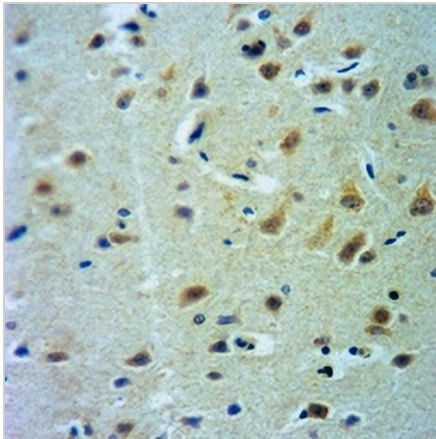
CLCN7 Rabbit Polyclonal Antibody

CAT. NO. APA06816

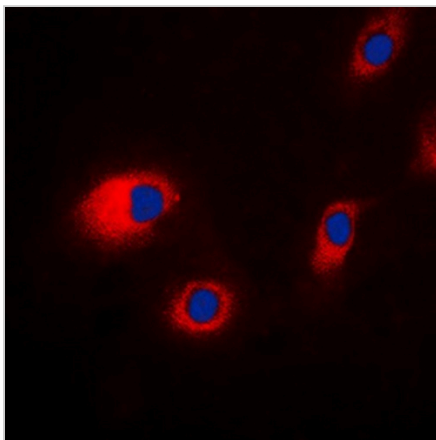
DATA



Western blot analysis of CLCN7 expression in HEK293T (A), mouse lung (B), mouse muscle (C), rat muscle (D) whole cell lysates. (Predicted band size: 88 kD; Observed band size: 75; 110 kD)



Immunohistochemical analysis of CLCN7 staining in rat brain formalin fixed paraffin embedded tissue section. The section was pre-treated using heat mediated antigen retrieval with sodium citrate buffer (pH 6.0). The section was then incubated with the antibody at room temperature and detected using an HRP conjugated compact polymer system. DAB was used as the chromogen. The section was then counterstained with haematoxylin and mounted with DPX.



Immunofluorescent analysis of CLCN7 staining in HeLa cells. Formalin-fixed cells were permeabilized with 0.1% Triton X-100 in TBS for 5-10 minutes and blocked with 3% BSA-PBS for 30 minutes at room temperature. Cells were probed with the primary antibody in 3% BSA-PBS and incubated overnight at 4 °C in a humidified chamber. Cells were washed with PBST and incubated with a DyLight 594-conjugated secondary antibody (red) in PBS at room temperature in the dark. DAPI was used to stain the cell nuclei (blue).

STORAGE

Store at 4°C short term. For long term storage, store at -20°C, avoiding freeze/thaw cycles.

NOTE

For Research Use Only. Not for diagnostic, therapeutics, prophylactic or in vivo use.