

**DATASHEET**

**CNGA2 Rabbit Polyclonal Antibody**

CAT. NO. APA06821

**KEY FEATURES**

Target	CNGA2	Source / Host	Rabbit
Reactivity	Human, Mouse, Rat	Clonality	Polyclonal
Applications	WB, IHC, IF/ICC	Conjugation	Unconjugated
Form / Buffer	Liquid in 0.42% Potassium phosphate, 0.87% Sodium chloride, pH 7.3, 30% glycerol, and 0.01% sodium azide.		Storage at -20°C

**BACKGROUND**

Pore-forming subunit of the olfactory cyclic nucleotide-gated channel. Operates in the cilia of olfactory sensory neurons where chemical stimulation of the odorant is converted to an electrical signal. Mediates odorant-induced cAMP-dependent Ca(2+) influx triggering neuron depolarization. The rise of intracellular Ca(2+) levels potentiates the olfactory response by activating Ca(2+)-dependent Cl(-) channels, but it also serves as a negative feedback signal to desensitize the channel for rapid adaptation to odorants. Conducts cAMP- and cGMP-gated ion currents, with permeability for monovalent and divalent cations.

**APPLICATION**

To ensure optimal assay performance, AREX recommends conducting reagent titration tailored to each testing system for optimal detection results.

WB	1:500 - 1:1000
IHC	1:50 - 1:100
IF/ICC	1:50 - 1:200

\*Results are sample-specific. Please refer to your local assay conditions and test parameters for reference.

**PRODUCT OVERVIEW**

Description	Rabbit polyclonal antibody to CNGA2
Specificity	Recognizes endogenous levels of CNGA2 protein.
Antibody Type	Primary antibody
Immunogen	KLH-conjugated synthetic peptide encompassing a sequence within the center region of human CNGA2. The exact sequence is proprietary.
Purification	The antibody was purified by immunogen affinity chromatography.
Molecular Weight	Predicted: 76 kD; Observed: 76 kD
Form/Buffer	Liquid in 0.42% Potassium phosphate, 0.87% Sodium chloride, pH 7.3, 30% glycerol, and 0.01% sodium azide.
Alternative Names	CNCA; CNCA1; CNCG2; Cyclic nucleotide-gated olfactory channel; Cyclic nucleotide-gated cation channel 2; Cyclic nucleotide-gated channel alpha-2; CNG channel alpha-2; CNG-2; CNG2
Gene Symbol	CNGA2
Entrez Gene	1260(Human); 12789(Mouse); 25411(Rat)
SwissProt	Q16280(Human); Q62398(Mouse); Q00195(Rat)

\*AREX continuously optimizes our products. Webpage content may not reflect the latest updates. For inquiries, please contact [info@arexbio.com](mailto:info@arexbio.com) or your local distributor.

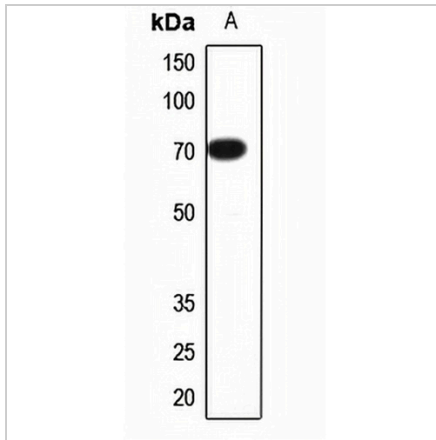
\*Clone Number, Reactivity, Source/Host and Clonality can be found in the product name and Key Features section above.

**DATASHEET**

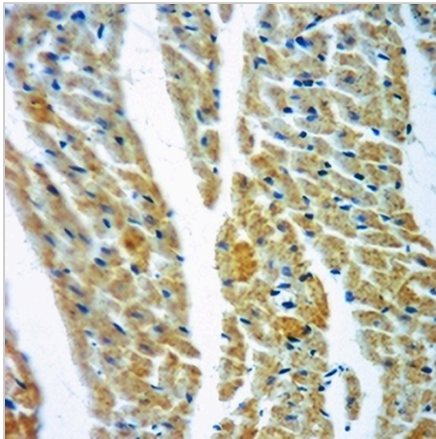
**CNGA2 Rabbit Polyclonal Antibody**

CAT. NO. APA06821

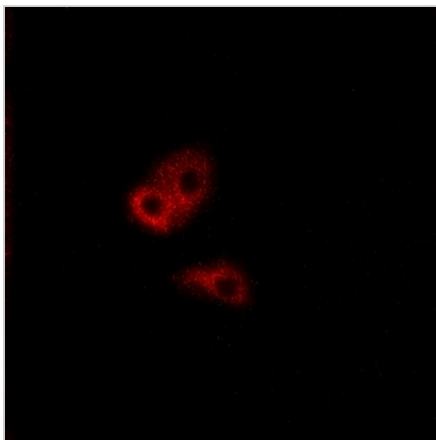
**DATA**



Western blot analysis of CNGA2 expression in H446 (A) whole cell lysates. (Predicted band size: 76 kD; Observed band size: 76 kD)



Immunohistochemical analysis of CNGA2 staining in rat heart formalin fixed paraffin embedded tissue section. The section was pre-treated using heat mediated antigen retrieval with sodium citrate buffer (pH 6.0). The section was then incubated with the antibody at room temperature and detected using an HRP conjugated compact polymer system. DAB was used as the chromogen. The section was then counterstained with haematoxylin and mounted with DPX.



Immunofluorescent analysis of CNGA2 staining in A549 cells. Formalin-fixed cells were permeabilized with 0.1% Triton X-100 in TBS for 5-10 minutes and blocked with 3% BSA-PBS for 30 minutes at room temperature. Cells were probed with the primary antibody in 3% BSA-PBS and incubated overnight at 4 °C in a humidified chamber. Cells were washed with PBST and incubated with a AREX® Fluor 594-conjugated secondary antibody (red) in PBS at room temperature in the dark.

**STORAGE**

Store at 4°C short term. For long term storage, store at -20°C, avoiding freeze/thaw cycles.

**NOTE**

For Research Use Only. Not for diagnostic, therapeutics, prophylactic or in vivo use.