

**DATASHEET**

**Collagen 8 alpha 1 Rabbit Polyclonal Antibody**

CAT. NO. APA06830

**KEY FEATURES**

Target	Collagen 8 alpha 1	Source / Host	Rabbit
Reactivity	Human, Mouse, Rat	Clonality	Polyclonal
Applications	WB	Conjugation	Unconjugated
Form / Buffer	Liquid in 0.42% Potassium phosphate, 0.87% Sodium chloride, pH 7.3, 30% glycerol, and 0.01% sodium azide.		Storage at-20°C

**BACKGROUND**

Macromolecular component of the subendothelium. Major component of the Descemet's membrane (basement membrane) of corneal endothelial cells. Also a component of the endothelia of blood vessels. Necessary for migration and proliferation of vascular smooth muscle cells and thus, has a potential role in the maintenance of vessel wall integrity and structure, in particular in atherogenesis.

**APPLICATION**

To ensure optimal assay performance, AREX recommends conducting reagent titration tailored to each testing system for optimal detection results.

WB	1:500 - 1:1000
----	----------------

\*Results are sample-specific. Please refer to your local assay conditions and test parameters for reference.

**PRODUCT OVERVIEW**

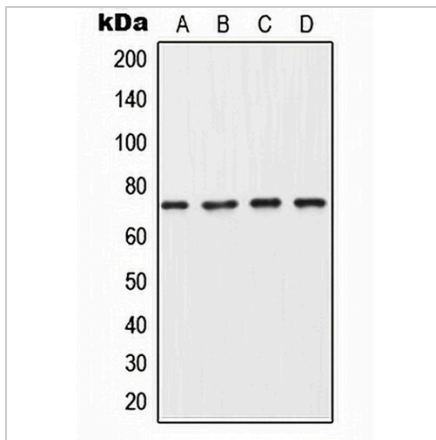
Description	Rabbit polyclonal antibody to Collagen 8 alpha 1
Specificity	Recognizes endogenous levels of Collagen 8 alpha 1 protein.
Antibody Type	Primary antibody
Immunogen	KLH-conjugated synthetic peptide encompassing a sequence within the center region of human Collagen 8 alpha 1. The exact sequence is proprietary.
Purification	The antibody was purified by immunogen affinity chromatography.
Molecular Weight	Predicted: 73 kD; Observed: 73 kD
Form/Buffer	Liquid in 0.42% Potassium phosphate, 0.87% Sodium chloride, pH 7.3, 30% glycerol, and 0.01% sodium azide.
Alternative Names	C3orf7; Collagen alpha-1(VIII) chain; Endothelial collagen
Gene Symbol	COL8A1
Entrez Gene	1295(Human); 12837(Mouse)
SwissProt	P27658(Human); Q00780(Mouse)

\*AREX continuously optimizes our products. Webpage content may not reflect the latest updates. For inquiries, please contact [info@arexbio.com](mailto:info@arexbio.com) or your local distributor.

\*Clone Number, Reactivity, Source/Host and Clonality can be found in the product name and Key Features section above.

**DATASHEET****Collagen 8 alpha 1 Rabbit Polyclonal Antibody**

CAT. NO. APA06830

**DATA**

Western blot analysis of Collagen 8 alpha 1 expression in MDA-MB453 (A), A549 (B), SP2/0 (C), PC12 (D) whole cell lysates. (Predicted band size: 73 kD; Observed band size: 73 kD)

**STORAGE**

Store at 4°C short term. For long term storage, store at -20°C, avoiding freeze/thaw cycles.

**NOTE**

For Research Use Only. Not for diagnostic, therapeutics, prophylactic or in vivo use.