

DATASHEET
CK2 beta (Phospho-S209) Rabbit Polyclonal Antibody
CAT. NO. APA06856
KEY FEATURES

| | | | |
|---------------|---|---------------|--------------|
| Target | CK2 beta (Phospho-S209) | Source / Host | Rabbit |
| Reactivity | Human, Mouse, Rat, Bovine, Chicken, Pig, Rabbit, Sheep | Clonality | Polyclonal |
| Applications | WB, IHC, IF/ICC | Conjugation | Unconjugated |
| Form / Buffer | Liquid in 0.42% Potassium phosphate, 0.87% Sodium chloride, pH 7.3, 30% glycerol, and 0.01% sodium azide. | Storage | at-20°C |

BACKGROUND

Regulatory subunit of casein kinase II/CK2. As part of the kinase complex regulates the basal catalytic activity of the alpha subunit a constitutively active serine/threonine-protein kinase that phosphorylates a large number of substrates containing acidic residues C-terminal to the phosphorylated serine or threonine . Participates in Wnt signaling .

APPLICATION

To ensure optimal assay performance, AREX recommends conducting reagent titration tailored to each testing system for optimal detection results.

| | |
|--------|----------------|
| WB | 1:500 - 1:1000 |
| IHC | 1:50 - 1:100 |
| IF/ICC | 1:50 - 1:200 |

*Results are sample-specific. Please refer to your local assay conditions and test parameters for reference.

PRODUCT OVERVIEW

| | |
|-------------------|--|
| Description | Rabbit polyclonal antibody to CK2 beta (Phospho-S209) |
| Specificity | Recognizes endogenous levels of CK2 beta protein only when phosphorylated at S209. |
| Antibody Type | Primary antibody |
| Immunogen | KLH-conjugated synthetic phosphopeptide corresponding to residues surrounding S209 of human CK2 beta protein. The exact sequence is proprietary. |
| Purification | The antibody was purified by immunogen affinity chromatography. |
| Molecular Weight | Predicted: 24 kD; Observed: 28 kD |
| Form/Buffer | Liquid in 0.42% Potassium phosphate, 0.87% Sodium chloride, pH 7.3, 30% glycerol, and 0.01% sodium azide. |
| Alternative Names | CK2N; G5A; Casein kinase II subunit beta; CK II beta; Phosvitin; Protein G5a |
| Gene Symbol | CSNK2B |
| Entrez Gene | 1460(Human); 13001(Mouse); 81650(Rat) |
| SwissProt | P67870(Human); P67871(Mouse); P67874(Rat) |

*AREX continuously optimizes our products. Webpage content may not reflect the latest updates. For inquiries, please contact info@arexbio.com or your local distributor.

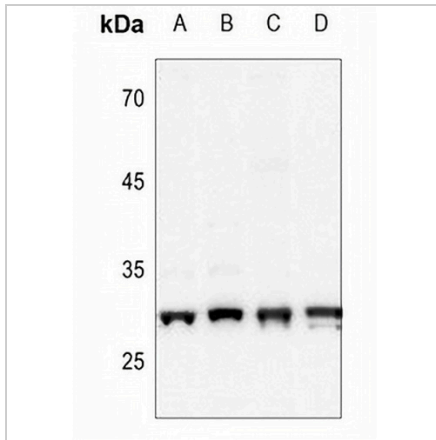
*Clone Number, Reactivity, Source/Host and Clonality can be found in the product name and Key Features section above.

DATASHEET

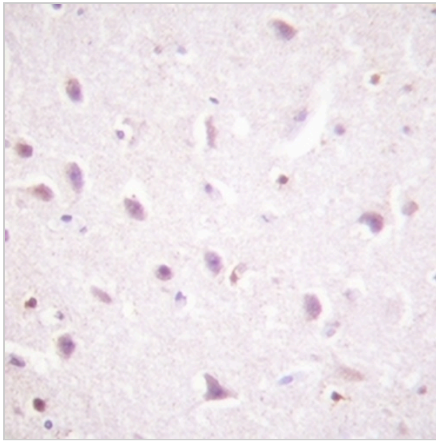
CK2 beta (Phospho-S209) Rabbit Polyclonal Antibody

CAT. NO. APA06856

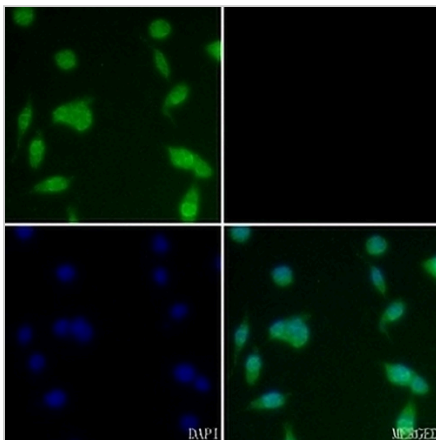
DATA



Western blot analysis of CK2 beta (Phospho-S209) expression in Myla2059 (A), EC9706 (B), mouse testis (C), rat thymus (D) whole cell lysates. (Predicted band size: 24 kD; Observed band size: 28 kD)



Immunohistochemical analysis of CK2 beta (Phospho-S209) staining in human brain formalin fixed paraffin embedded tissue section. The section was pre-treated using heat mediated antigen retrieval with sodium citrate buffer (pH 6.0). The section was then incubated with the antibody at room temperature and detected using an HRP conjugated compact polymer system. DAB was used as the chromogen. The section was then counterstained with haematoxylin and mounted with DPX.



Immunofluorescent analysis of CK2 beta (Phospho-S209) staining in BV2 cells. Formalin-fixed cells were permeabilized with 0.1% Triton X-100 in TBS for 5-10 minutes and blocked with 3% BSA-PBS for 30 minutes at room temperature. Cells were probed with the primary antibody in 3% BSA-PBS and incubated overnight at 4 °C in a hidified chamber. Cells were washed with PBST and incubated with a AREX® Fluor 488 - conjugated secondary antibody (green) in PBS at room temperature in the dark. Phalloidin - AREX® Fluor 594 was used to stain Actin filaments (red). DAPI was used to stain the cell nuclei (blue).

STORAGE

Store at 4°C short term. For long term storage, store at -20°C, avoiding freeze/thaw cycles.

NOTE

For Research Use Only. Not for diagnostic, therapeutics, prophylactic or in vivo use.